



5872
**10ZiG Peak OS Linux V12
USER GUIDE**

About This Guide

Thank you for choosing from the 10ZiG Technology series of thin clients which are specifically designed for power users in an office environment. They feature a powerful, yet simple and affordable solution to virtual desktop computing in a fashionable and sleek design.

In this User Guide, you will find everything you need to quickly begin using your new device. Please be sure to verify with your network administrator that your network is prepared for the configuration of your new device.

Declaration of Conformity

It is hereby declared that this device is in conformity with the essential requirements, and other relevant provisions of the CE and the FCC.



CE Mark Warning

This is a class B device, in a domestic or office environment. This product may cause radio interference, in which case the user may be required to take adequate measures.

Waste Electrical and Electronic Equipment (WEEE) Warning

To potentially avoid adverse effects on the environment, and human health, as a result of the presence of hazardous substances in electrical and electronic equipment, end users of electrical and electronic equipment should understand the meaning of the crossed-out wheeled bin symbol. Do **NOT** dispose of WEEE as unsorted municipal waste as municipalities must collect WEEE separately.

Table of Contents

ABOUT THIS GUIDE.....	1
GETTING STARTED	3
Packing List.....	3
Initial Setup	3
Initial Boot-up	3
SUPPORT.....	1
Serial Number	2
Introduction	2
CONNECTION MANAGER.....	1
LIST OF CONNECTIONS.....	1
ADDING A CONNECTION APPLICATIONS	2
CONNECTING TO AN APPLICATION.....	3
SHUTTING DOWN AND OR REBOOTING	4
CONNECTION TYPES.....	5
CITRIX CONNECTIONS.....	5
Citrix XenApp Plugin (ICA Client)	5
Citrix XenDesktop	5
Citrix XenApp Agent – (Legacy PNAgent).....	5
Citrix Internet Browser (FireFox – Citrix StoreFront).....	5
VDI-in-a-Box – (Kaviza)	5
INTERNET CONNECTION.....	5
Internet Browser (FireFox).....	5
2X	5
2X Client	5
RDP	6
FreeRDP	6
RDP Video Settings Wizard.....	6
VMWARE HORIZON.....	8
VMware Horizon View Client.....	8
TERMINAL PROPERTIES.....	9
AUTO SHUTDOWN.....	10
CERTIFICATES.....	10
DATE & TIME	11
Clock Tab	11

Time Zone Tab	11
Time Server Tab	12
CITRIX ICA GLOBAL SETTINGS	13
ICA Preferences Tab	13
ICA Hot Keys Tab.....	14
ICA Server Location tab	15
ICA Firewall Settings Tab.....	15
ICA Devices Tab	16
ICA Advance Tab	17
JAVA CACHE.....	18
KEYBOARD.....	19
LOG	20
MOUSE	21
NETWORK FILE SYSTEM.....	22
Network Share Applet	23
Network Files System Dialog	23
PACKAGE MANAGER.....	24
PRINTERS.....	26
Add Printer Wizard	26
Add Printer Wizard - Local Printer	27
Add Printer Wizard - Network Printer.....	30
SECURITY.....	33
Install SSL Certificate	34
SOUND CONFIGURATION.....	34
SYSTEM	35
System Information tab	35
Restore Factory Defaults	36
System Terminal Tab	37
System Advanced Tab.....	37
System BIOS Information Tab	38
TOUCHSCREEN	39
USB REDIRECTION	41
VNC SHADOWING	42
DESKTOP.....	43
Desktop Appearance Tab.....	43
Desktop Advanced Tab.....	44
Desktop Advanced Tab - WBT Mode.....	44
Desktop Advanced Tab - Full Desktop	45
Desktop Advanced Tab - Kiosk Mode.....	45
CISCO VPN CLIENT.....	45
Cisco VPN Client - Login Tab.....	45
Cisco VPN Client - Network Tab	46
Cisco VPN Client - Advanced Tab.....	47
NETWORK.....	47
Wireless Network Connection (Optional)	49
CITRIX XENAPP AGENT	52

DISPLAY	52
Dual Monitors	53
Display - Advanced Tab.....	55

Getting Started

Packing List

The following components are included in the package:

- Thin Client Device
- Stand
- 12 VDC Power Adapter with Cord

Optional equipment that may be included:

- USB Wheel Mouse
- USB to PS2 Adapter
- SVGA to DVI Adapter
- Monitor Mount Kit (may include optional video cable)
- SVGA and DVI splitter cable
- Wireless Network Adapter and Antenna
- Quick Installation Guide & Management Software CD

Check this list before installation to ensure that you have received each item ordered. If you are missing any items, please contact technical support.

Initial Setup

To setup the device for initial use :

- Attach the Stand (if desired)
- Connect a Keyboard, Monitor and Mouse
- Connect to a Network and a Power Source

Initial Boot-up

Upon initial boot-up, the 5872 will attempt to configure the network settings using DHCP. Once the unit has obtained an IP address, your 5872 will boot into WBT (Windows Based Terminal) mode to the connection manager.

Support

If you require support for your Linux-based thin client, please contact your region's nearest Technical Support Center. While 10ZiG Technology does provide technical support for its Linux-based thin clients, it does not provide support for the Linux operating system or application components that are obtained from the open source community and that may be included as part of the software image installed.

10ZiG Technology Limited

Headquarters US

23309 N 17th Dr - Ste 100

Phoenix, AZ 85027

Phone 866-864-5250 • Fax 623-516-8697

support@10zig.com

sales@10zig.com

www.10zig.com

Headquarters UK

10ZiG Technology Limited

Unit S2, Troon Way Business Centre

Humberstone Lane

Leicester

LE4 9HA

UK

Phone +44 (0)116 2148650 • Fax +44 (0)116 2148651

support@10zig.eu

sales@10zig.eu

www.10zig.eu

Serial Number

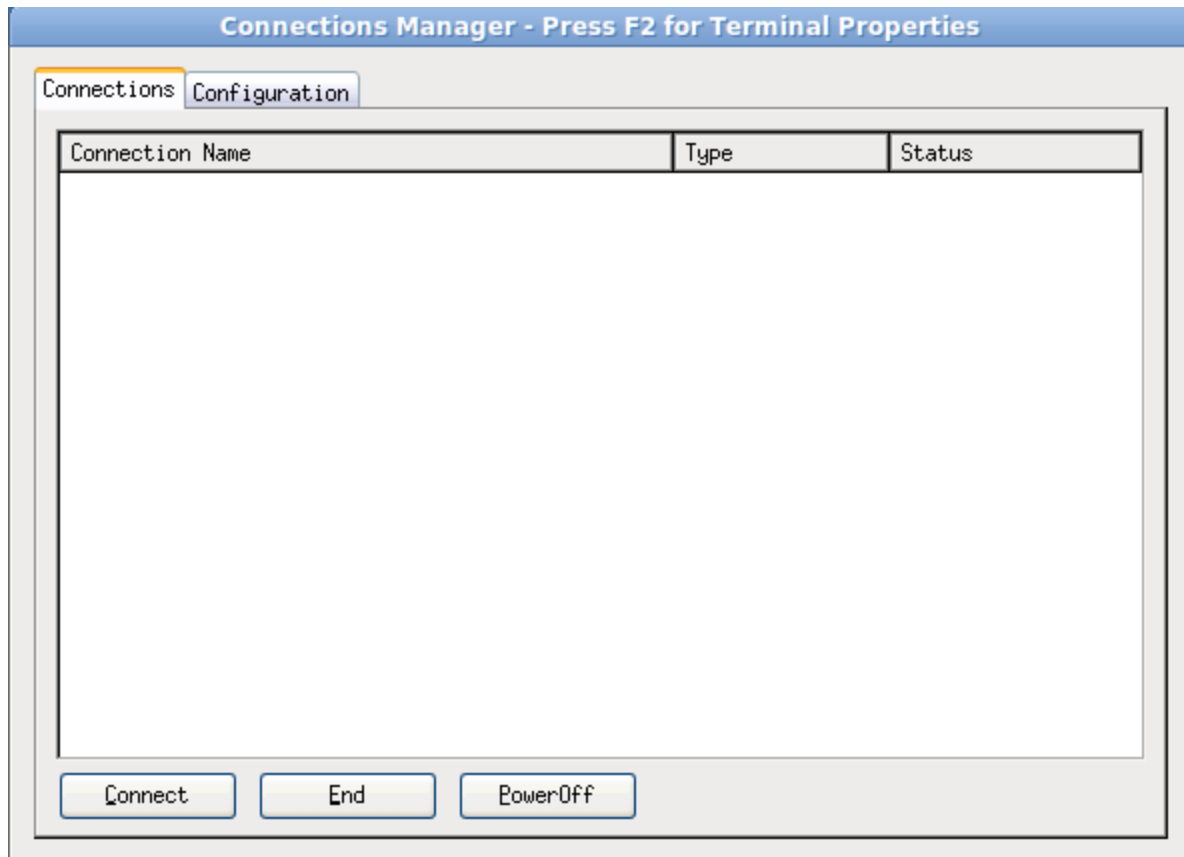
Each thin client has a unique serial number which is labeled as **ID CODE:** followed by the MAC address of the unit. The sticker with this information may be found either on the side, bottom or near the video output port, depending on which model you have. Please have this number available when contacting 10ZiG Technology's Technical Support for assistance. You may also find this number in the 10Zig Manager or while on the unit itself under **Terminal Properties> Network> Local Area> Status...** labeled **Physical Address**.

Introduction

This section provides the user with instructions for the hardware configuration of the Linux-based thin client and explains the various utilities used to accomplish these tasks. Typically, a thin client is configured locally and then used as a template to configure other units. These saved configuration templates may then be pushed out to additional thin clients using the optional 10ZiG Server Manager

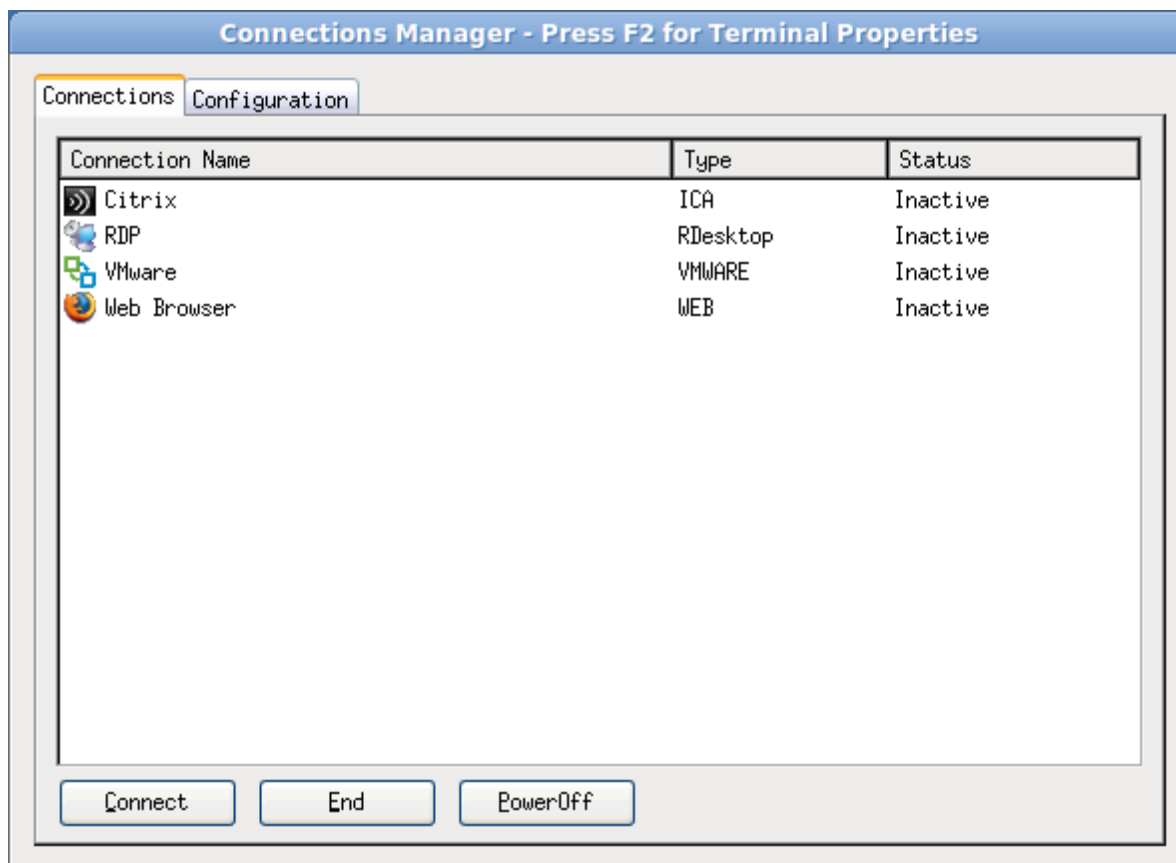
Connection Manager

By default your 5872 boots up on WBT mode (Windows Based Terminal), you will see the Connections Manager.



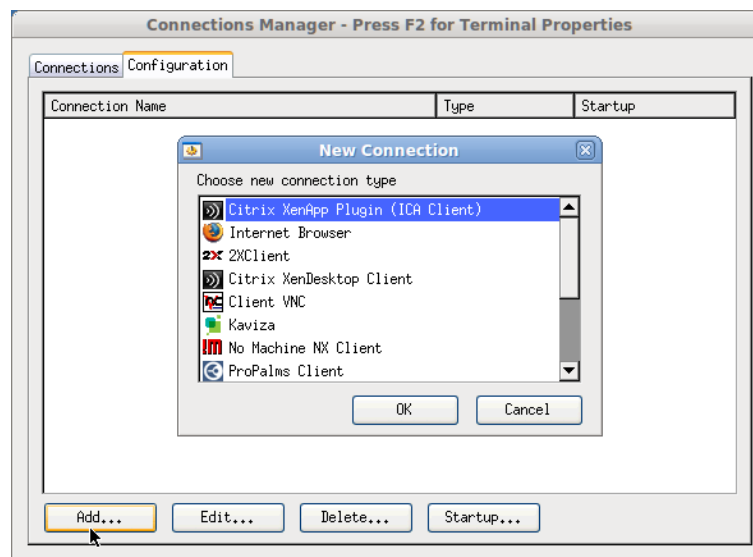
List of Connections

From the Connection Manager users and administrators can see a list of any connections that have been added to your 5872. If you do not see a connection to an application you need, see add a connection in the next section.



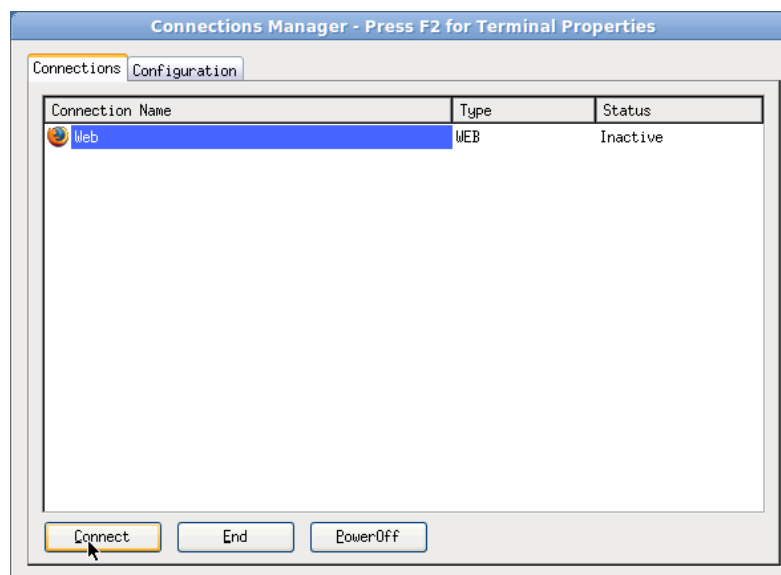
Adding a Connection Applications

From the Connection Manager Administrators can add connections to any of the application by clicking on the Configuration Tab and then click add button. Then choose which application you want to configure.



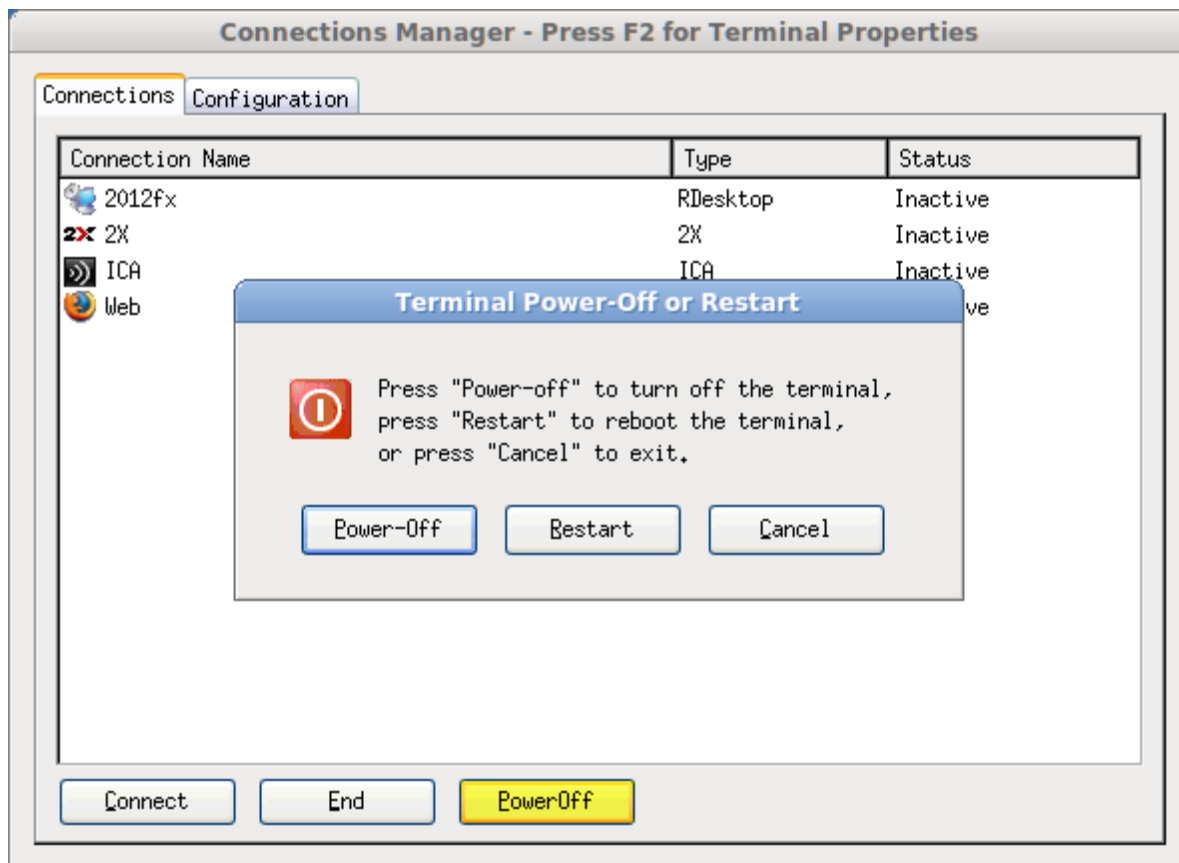
Connecting to an Application

Once an application has been added and configured users can highlight the application name and choose connect to access any application that had been configured.



Shutting down and or rebooting

If you are connected to a session, log off or disconnect from the session, and then from the connection manager click on the PowerOff button, you will now be presented with the option to Power-Off the unit, which will shut it down completely. YOU can restart the unit or if you press the cancel button the unit will stay powered on.



(Note: you can also shutdown, re-boot or power on the 5872 using the optional 10ZiG Manager)

Connection Types

Citrix Connections

Citrix XenApp Plugin (ICA Client)

For connection to a Citrix XenApp server

Citrix XenDesktop

For connection to a Citrix XenDesktop server

Citrix XenApp Agent – (Legacy PNAgent)

For connection to a legacy PNAgent environment

Citrix Internet Browser (FireFox – Citrix StoreFront)

Using the FireFox browser to connect to a Citrix StoreFront server

VDI-in-a-Box – (Kaviza)

To connect to VDI-in-a-Box / Kaviza server

Internet Connection

Internet Browser (FireFox)

For a connection to the internet or intranet for general browsing.

2X

2X Client

To connect to a 2X server or connect using RDP

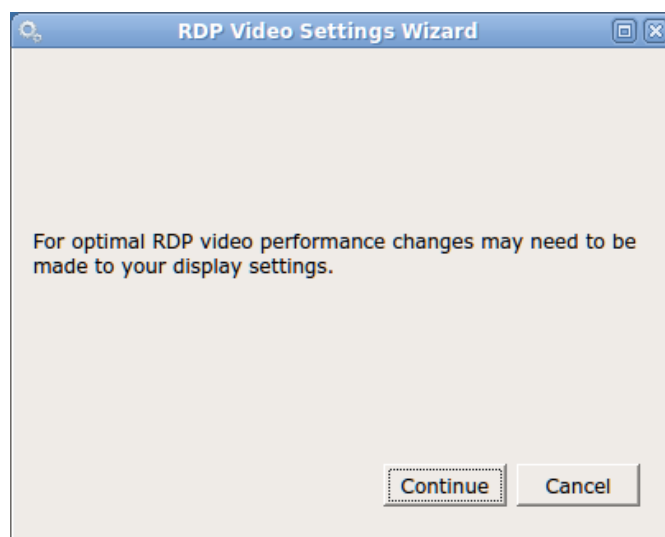
RDP

FreeRDP

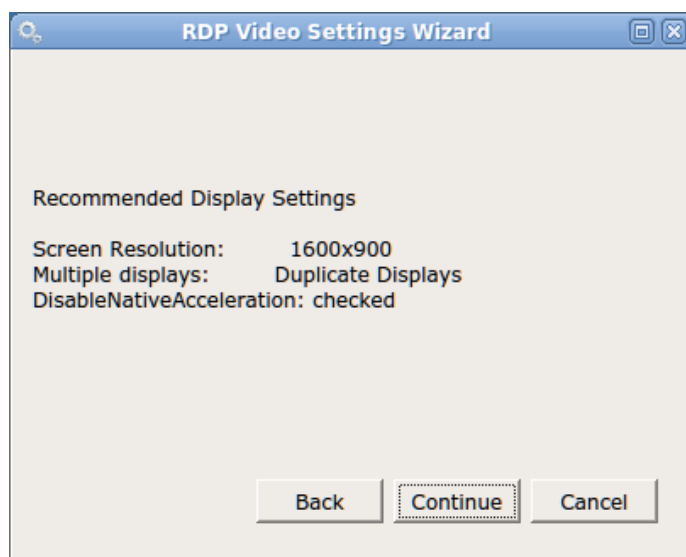
For connecting to a windows RDP server or desktop

RDP Video Settings Wizard

When you setup an RDP session the RDP Video Settings Wizard will pop up



If you click the continue button the wizard will then display it's recommend display settings for your RDP session

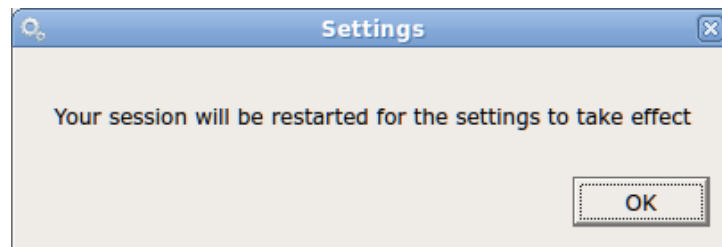


If you press the Continue button again the wizard will confirm these settings and then ask you to press the Apply button to change your settings to the recommended settings



If you click the cancel button, you will back at the connections manager and ready to connect, and the back button will take you back one step.

When you click the apply button you will then see a popup notifying you that your session needs to be restarted for the settings to take effect.



Click the OK button and your screen(s) will go blank for a few seconds and then come back on to the connection manager and your RDP display will be optimized for the RDP connection.

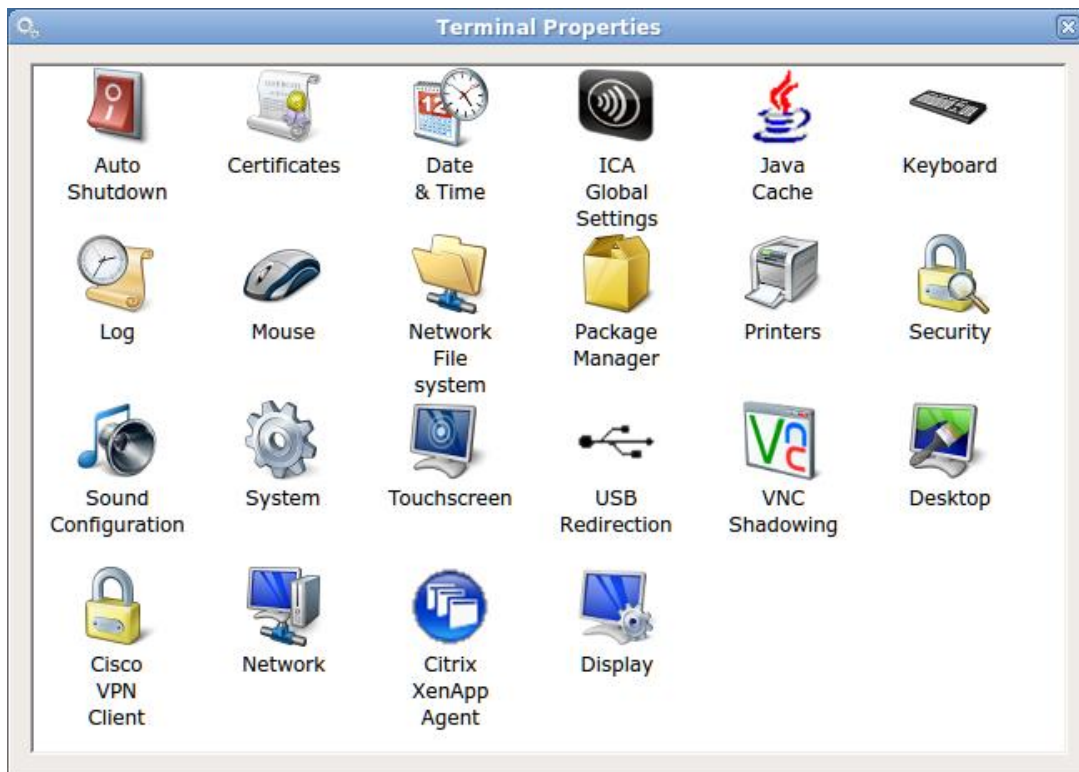
VMware Horizon

VMware Horizon View Client

For connection to a VMware Horizon Server and virtual desktop

Terminal Properties

From the connection manager press F2 to access the Terminal Properties

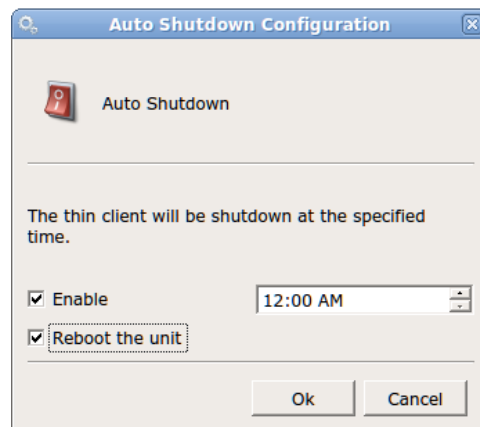


Auto Shutdown



Auto
Shutdown

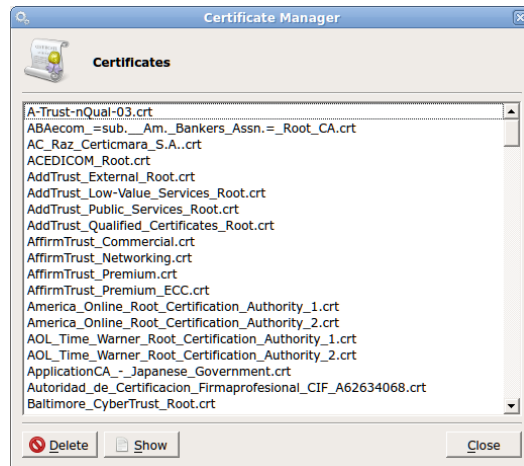
The Auto Shutdown applet allows administrators to enable the 5872 to be shut down automatically at a specified time or allow the unit to reboot at a specified time.



Certificates



The Certificates applet opens the Certificate Manager and allows administrators to Delete or Show the certificates that are currently installed on your 5872. (**Note:** to install a certificate Please see the Security link in the table of contents.)



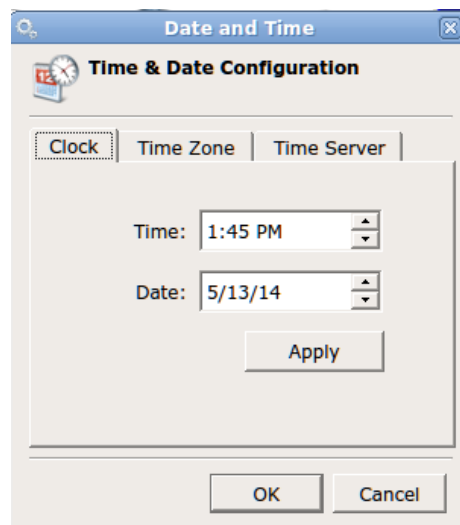
Date & Time



Date & Time The Date and Time applet allows administrators to set the current time and date, time zone and if a NTP time server will be used.

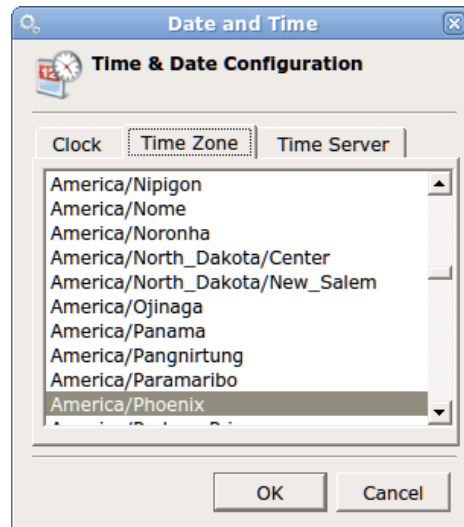
Clock Tab

The Clock tab, allows you to set the current time and date (Note you must hit Apply after setting the time and date).



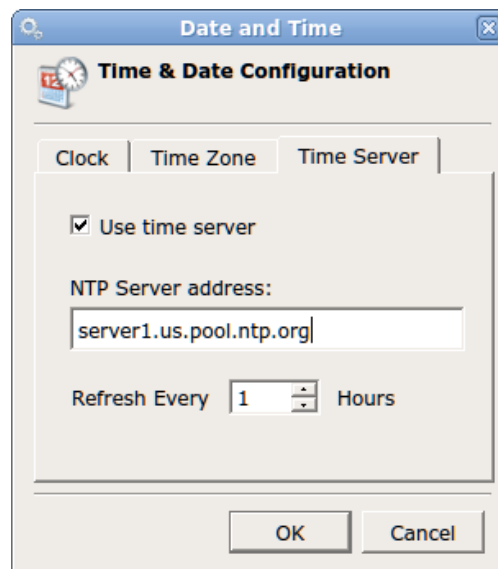
Time Zone Tab

The Time Zone Tab allows you to set your current time zone



Time Server Tab

The time server tab allows you to sync your 5872 with an NTP server either internal or external, you just need to click the box to Use Time Server and enter the server name or IP address (Note, you must have internet access to use an external time server).



Citrix ICA Global Settings

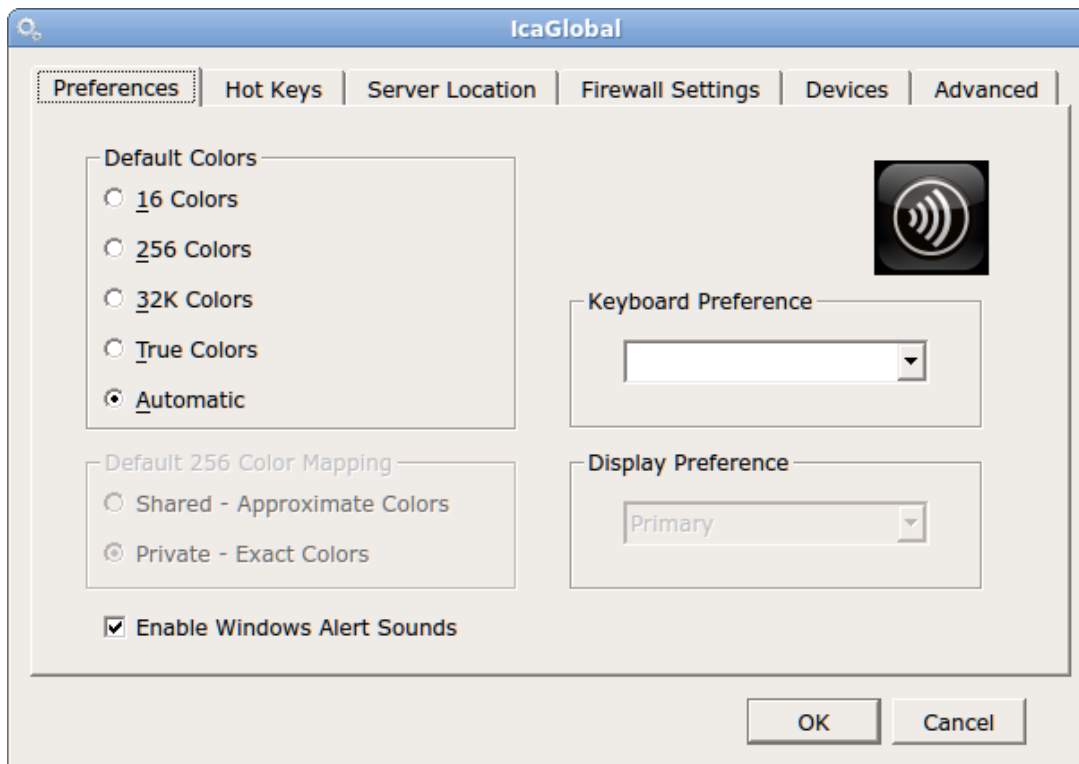


ICA
Global
Settings

To set the global ICA setting for you thin client open the Citrix ICA Global Settings Icon.

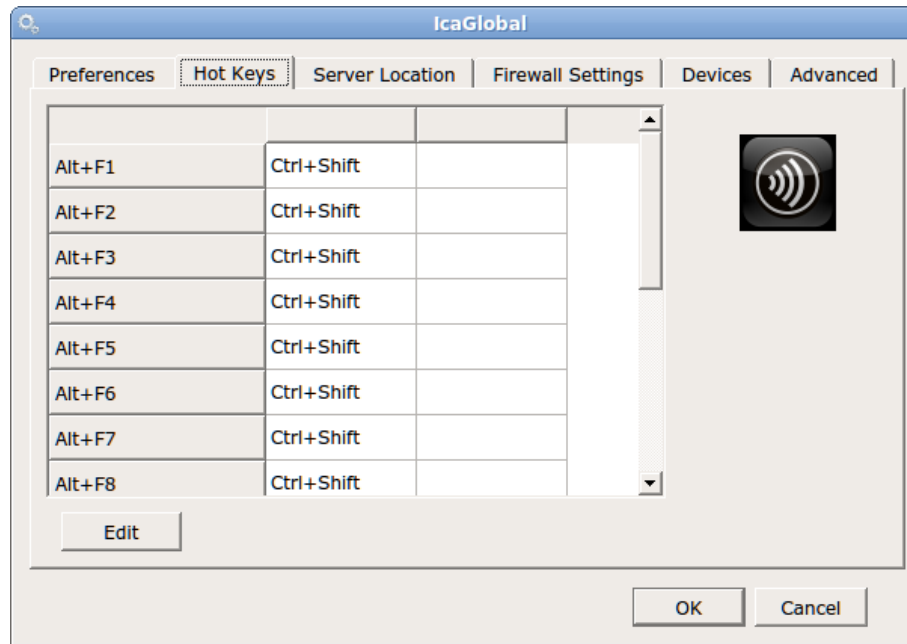
ICA Preferences Tab

On the preferences tab you can choose your default colors, keyboard preferences, enable Windows alert sounds and choose your display preferences is using more than one monitor with your 5872



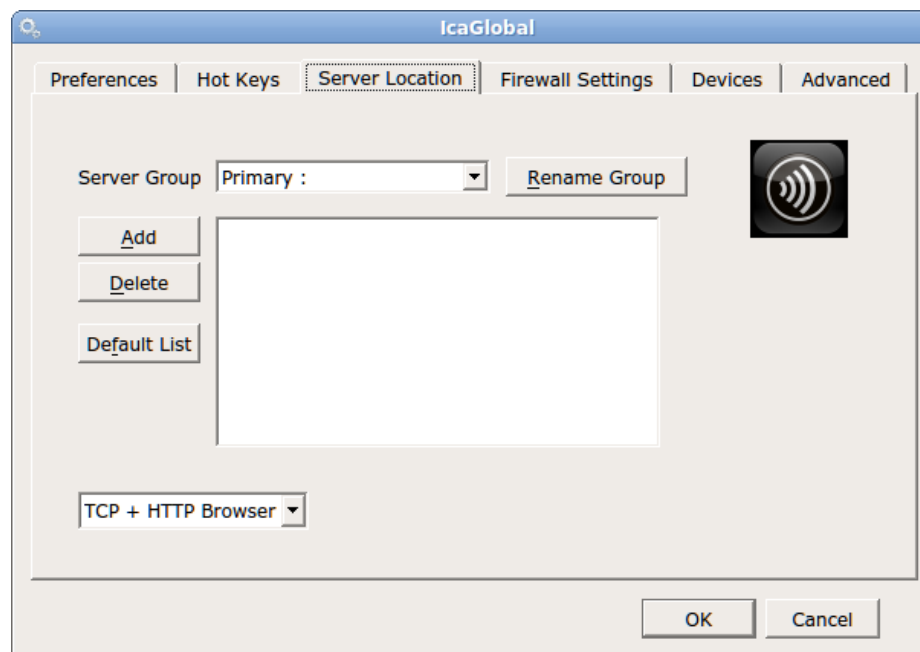
ICA Hot Keys Tab

Allows you to edit which hot key combination will be used with your Citrix connection.



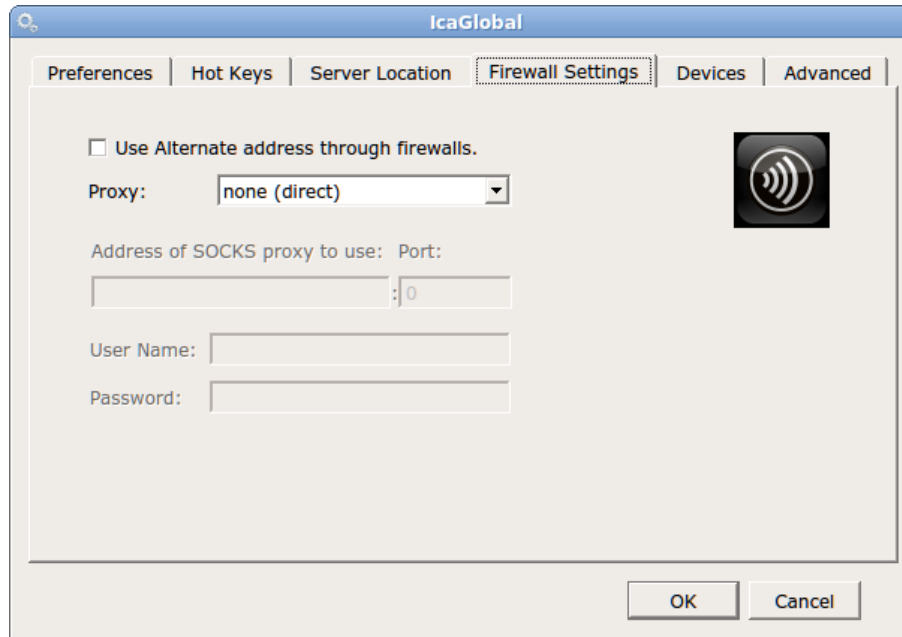
ICA Server Location tab

From the Server location tab you can add the names of your Citrix servers and the group or groups for your connections



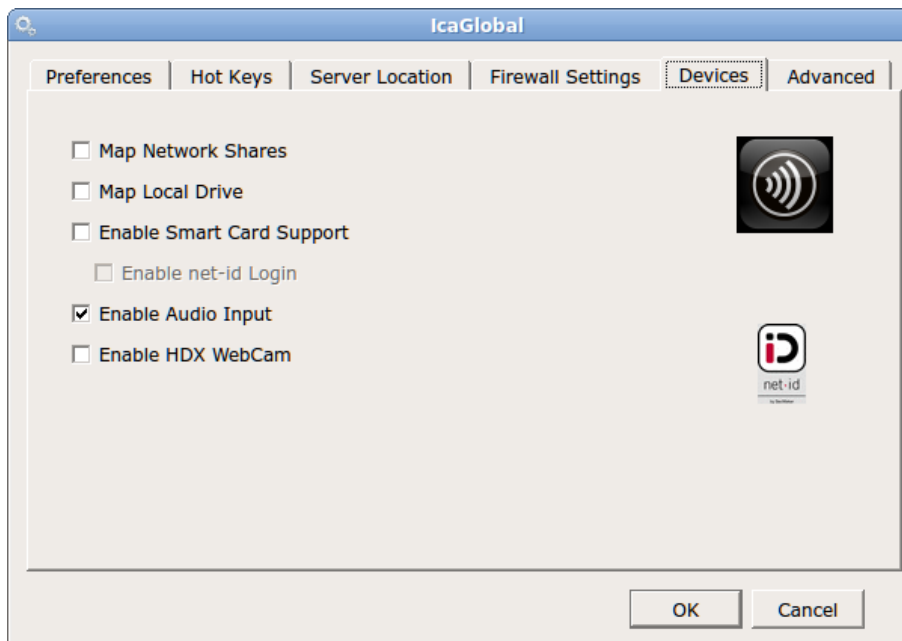
ICA Firewall Settings Tab

The Firewall settings will allow administrators to enter a proxy server if used in your environment.



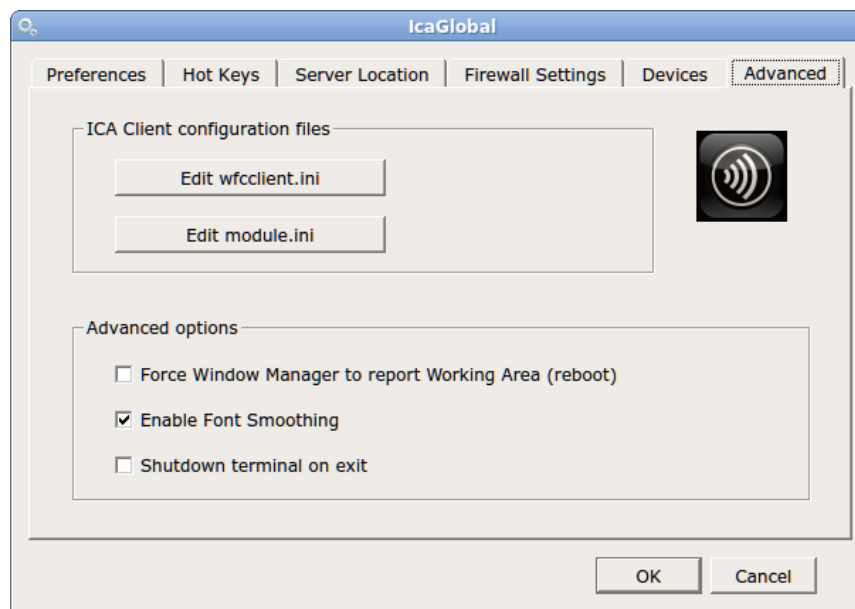
ICA Devices Tab

This tab allow you to choose which devices will be passed through to the Citrix server when in session



ICA Advance Tab

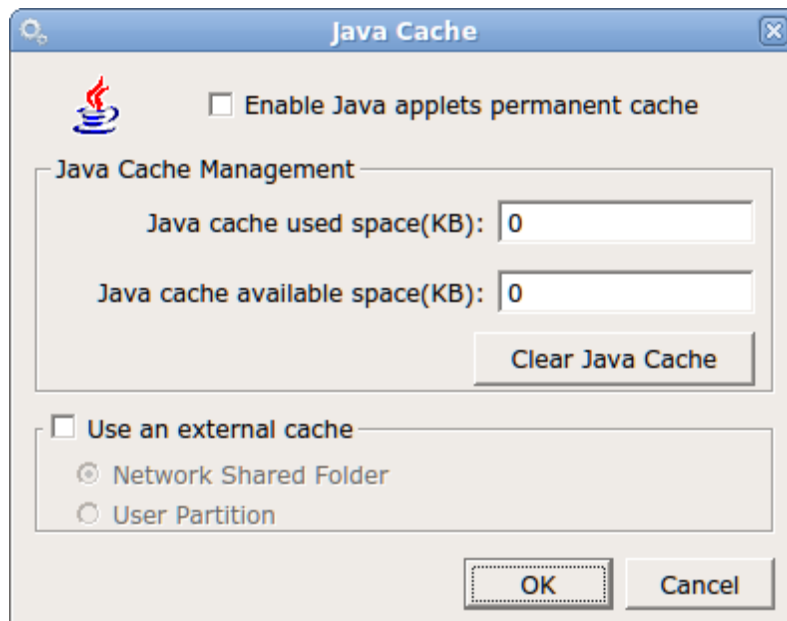
The advanced tab will allow you to edit the wfccclient.ini and module.ini and also to enable or disable the Window manager to report working area, enable or disable font smoothing and to enable or disable shutdown terminal on exit.



Java Cache



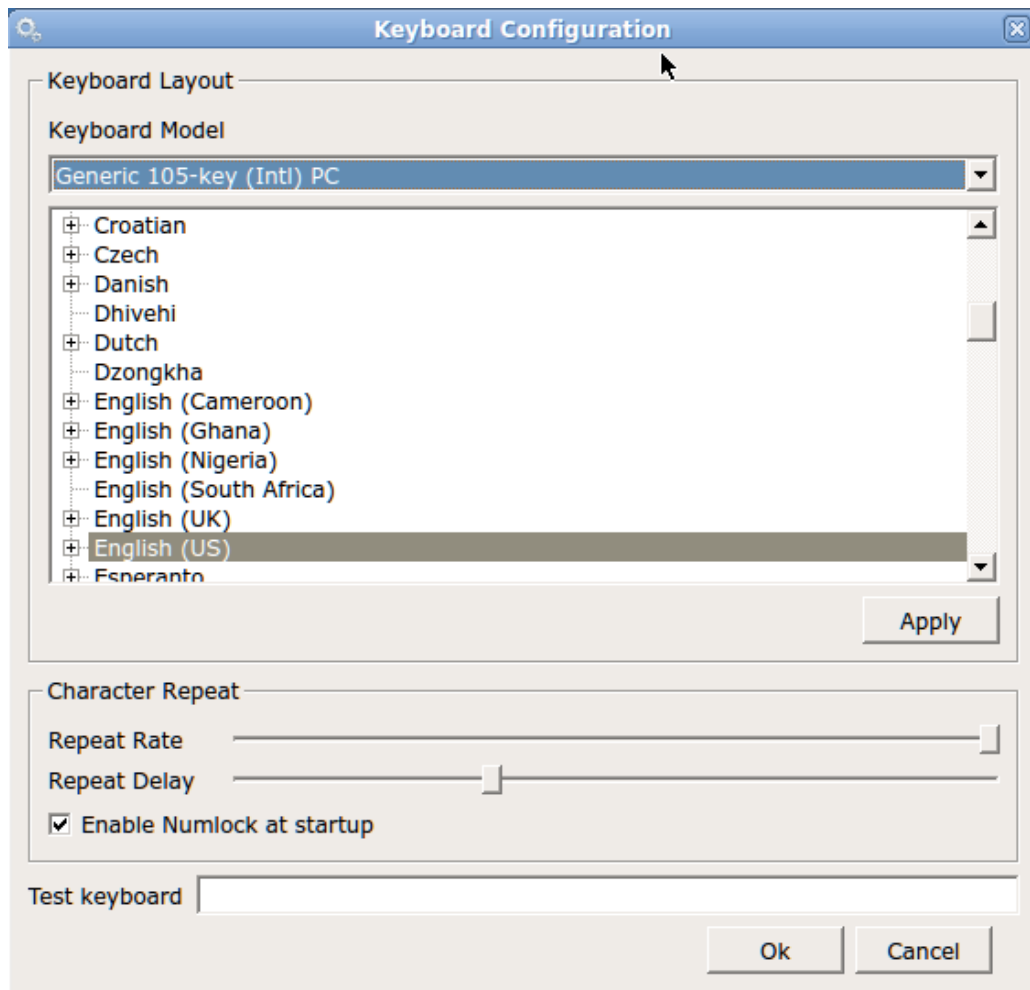
The Java Cache applet allows administrators to enable Java applets permanent cache, you can specify the cache space use and available cache space, clear the Java cache or use an external cache on a network share or user's partition



Keyboard



Keyboard Opening the **Keyboard** window displays the **Layout Tab** which allows you to select the keyboard model and country layout, as well as test keystroke output in the **Test Keyboard:** dialog box.



You can also set the keyboard character repeat rate and repeat delay, and the **enable Numlock at startup** by using the checkbox.

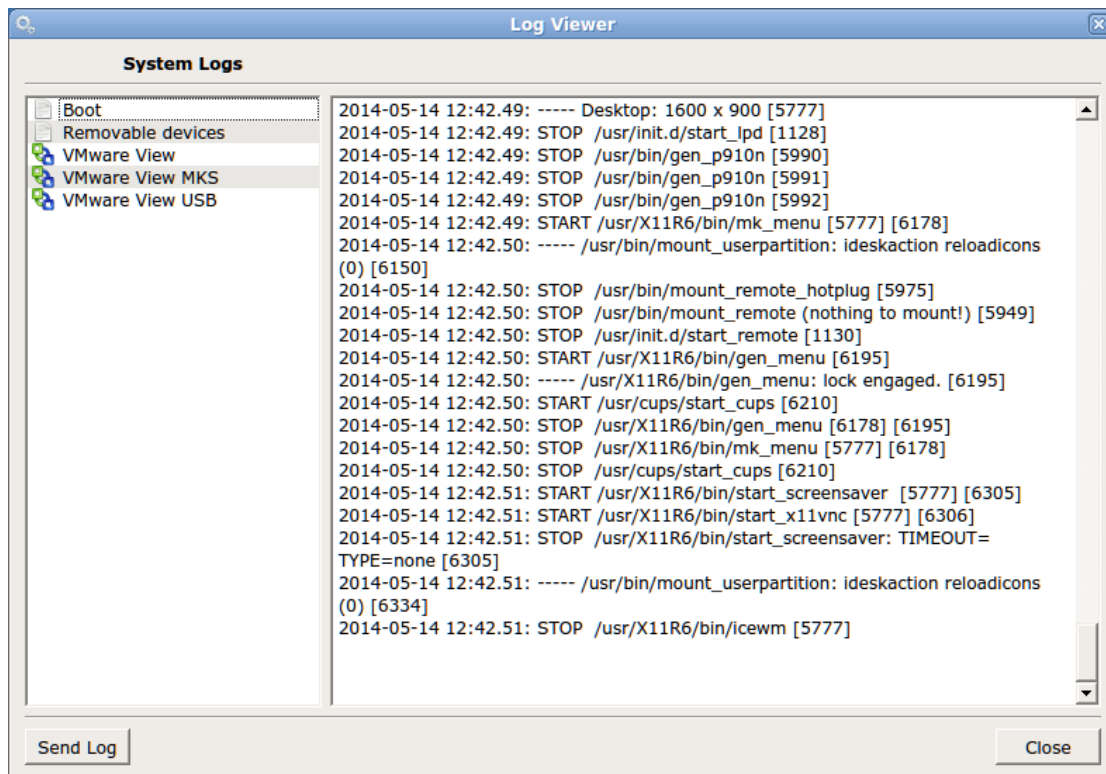
Log



Log

Selecting a Log file from the left pane will enable you to view it in the right pane. **Please Note:** If you are asked by a 10Zig Support technician, you may select the log file and then Click on the **Send Log** button at the bottom of the

window to copy the file automatically to the 10Zig FTP site (a working connection to the Internet is required).



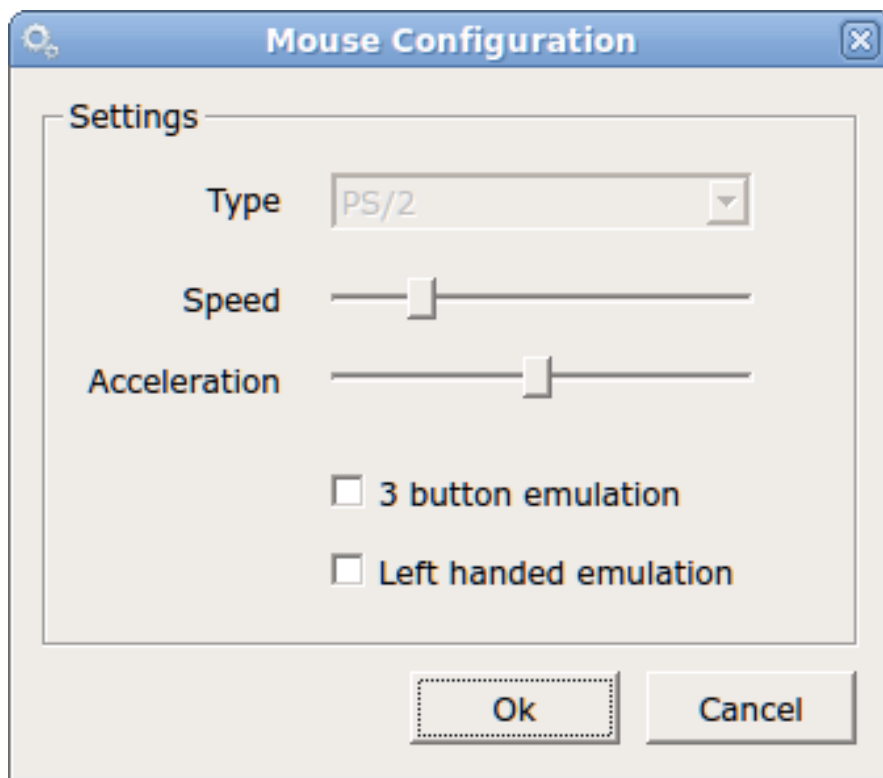
Mouse



Mouse

Opening the Mouse Configurations applet, currently only USB and PS2 mice are supported. The **Type** option is automatically detected at system boot with no

ability to change it. The Mouse window allows you to set the mouse speed, and acceleration settings. You may also configure the mouse buttons for 3 button emulation or for left-handed users.

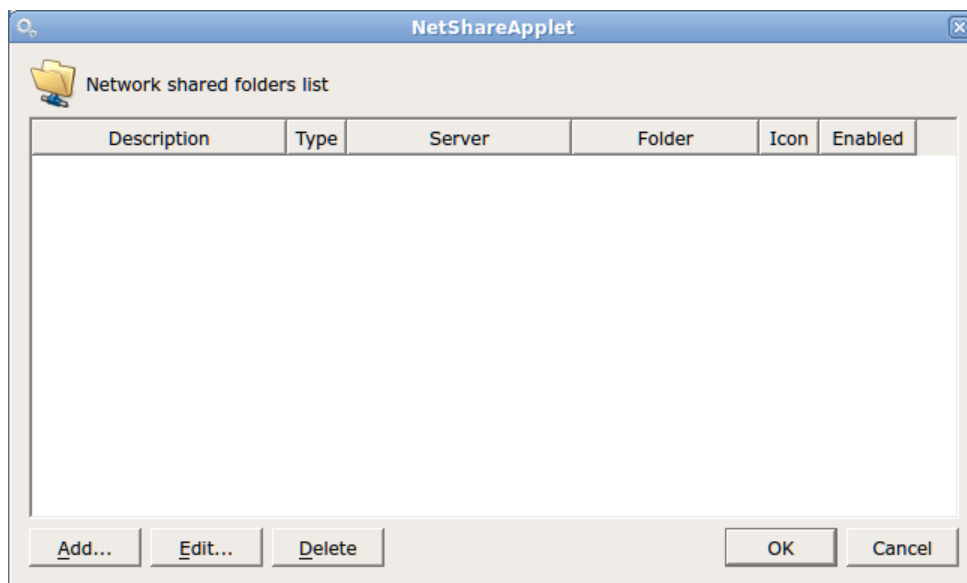


Network File System



Network Share Applet

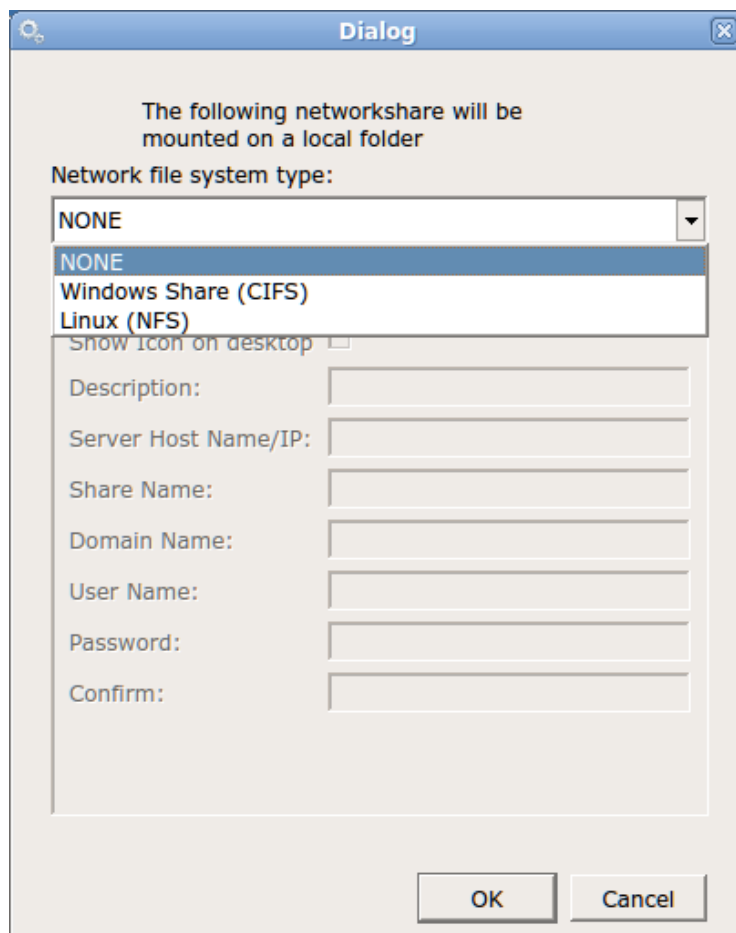
To add a network share for you thin client to access open the network file system applet and then click on the add button



Network Files System Dialog

Choose your file system type either a Windows share (CIFS) or a Linux share (NFS), then click to show the icon on the desktop, enter a description, the server

name or IP address, the share name, the domain name (if applicable) the user name and password and confirm the password, then click the ok button and your thin client will now have access to this network share.

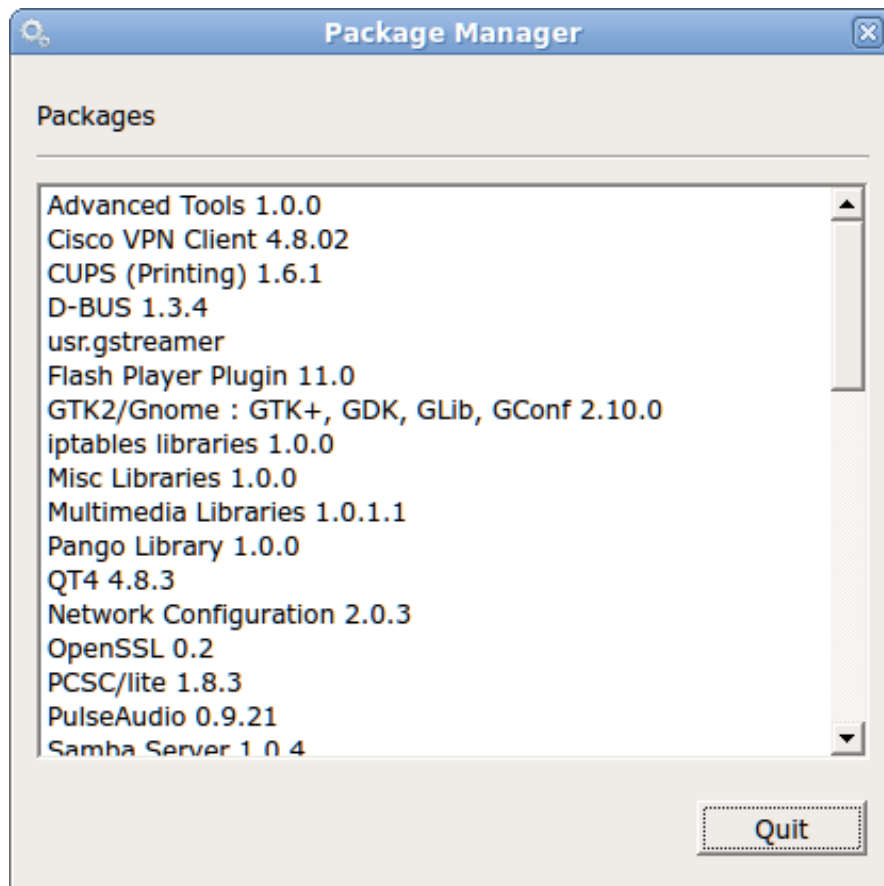


Package Manager



Package Manager

Selecting **Packages** Manager will show the currently installed Linux packages on the unit.



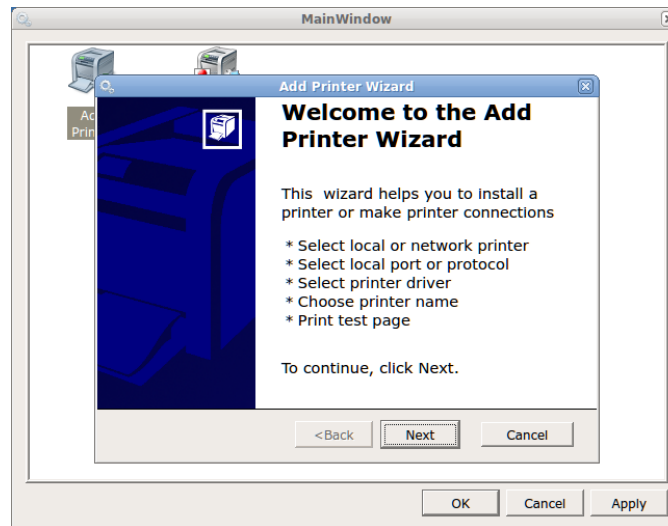
Printers



Printers To add a printer to your 5872 open the terminal properties, then open the printers icon, from in the printers applet double click on add a printer and the add printer wizard will open.

Add Printer Wizard

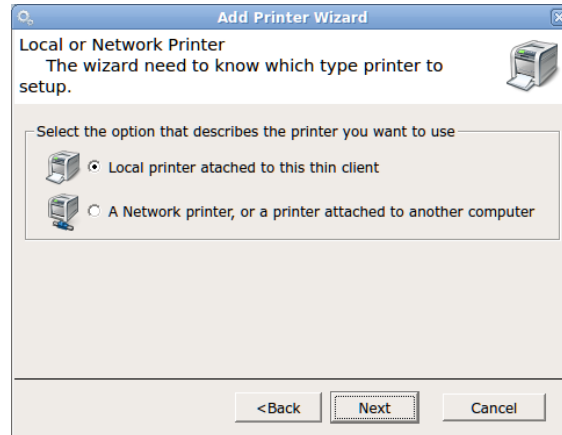
When the add printer wizard open, click next



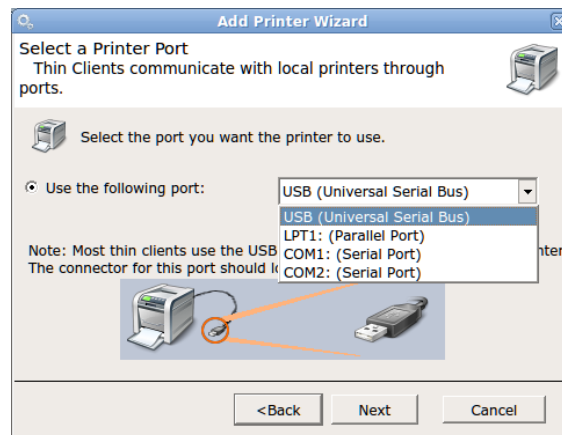
Then choose either local printer attached to this thin client, or Network Printer or printer attached to another printer.

Add Printer Wizard - Local Printer

If installing a local printer attached to the thin client keep the radio button on local printer attached to this thin client

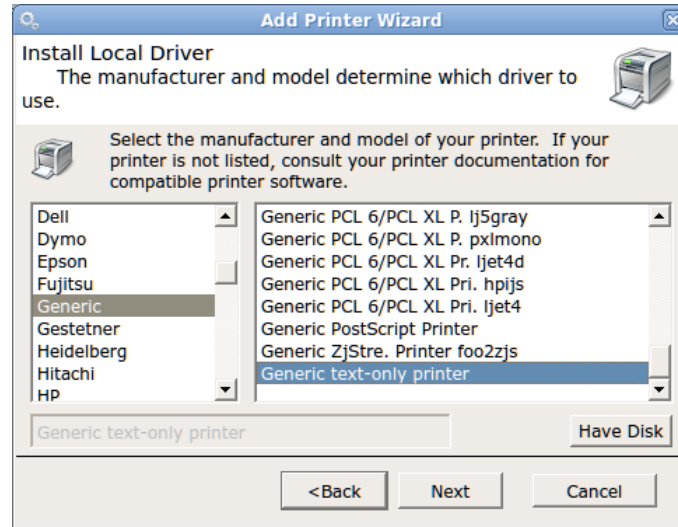


And then click Next.

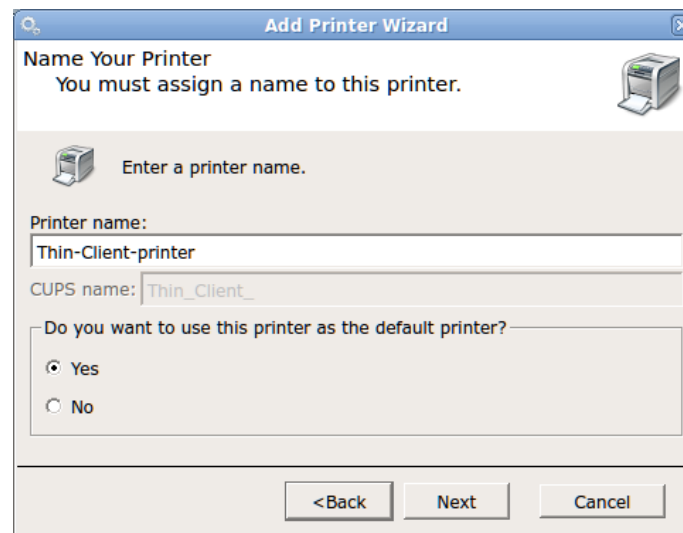


Then select which port to use, (USB, LPT1, COM1 or COM2) and click next.

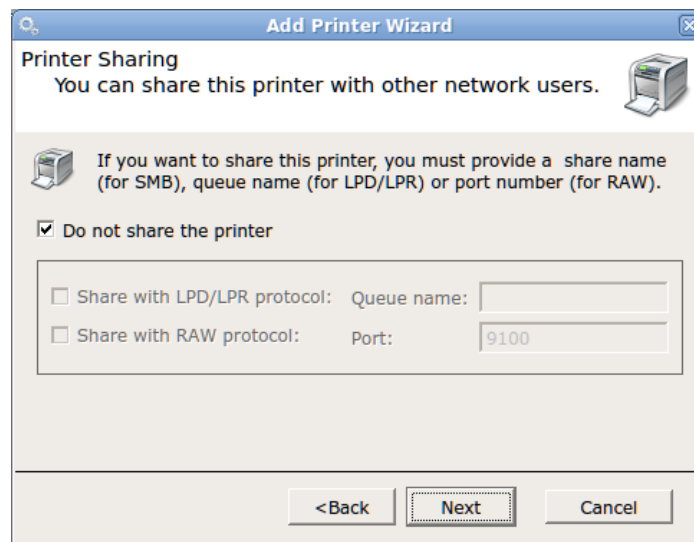
Now you will choose which drive to use for your printer and click next.



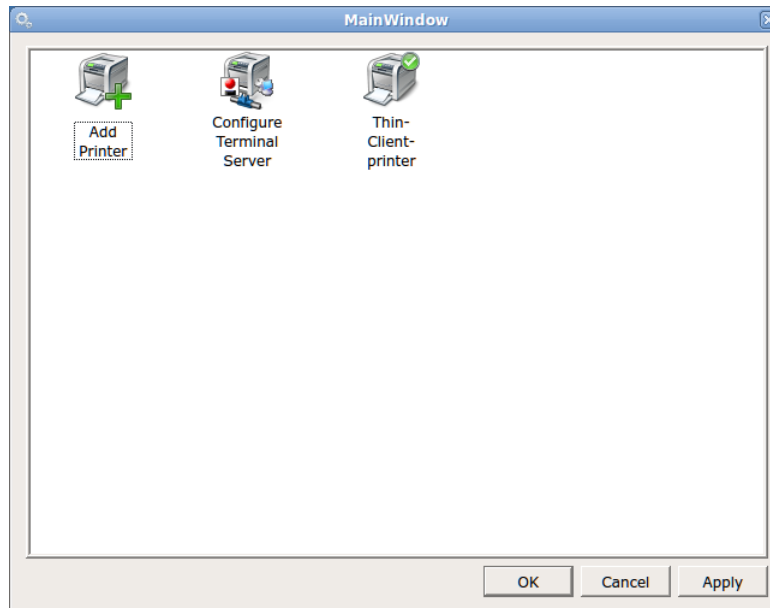
Now give your printer a name and choose if you want this to be the default printer and click next.



Now choose if you want to share this printer or not, either using LPD/LDR or with the RAW protocol and click next.

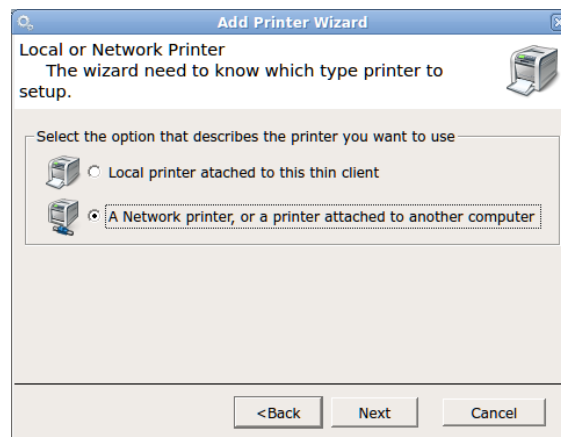


Choose your paper size and click next, then click if you would like to print a test page and click next and then the finish button and you will see your local printer in the main window of the printer applet. Click ok to exit the printer applet

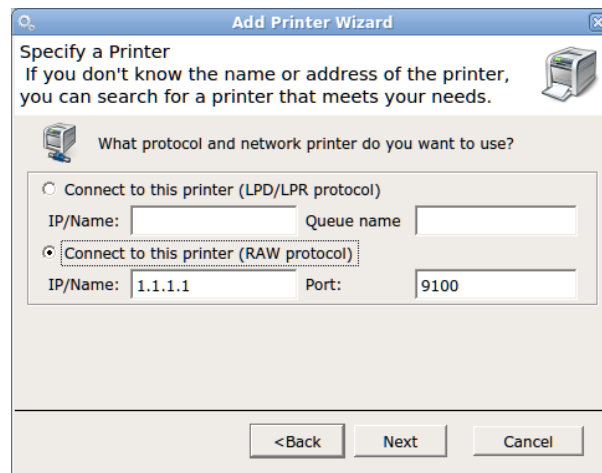


Add Printer Wizard – Network Printer

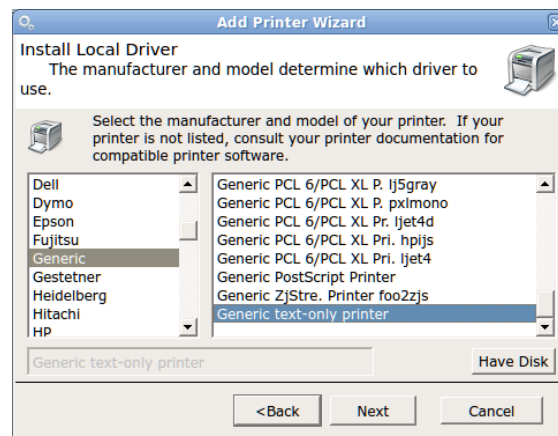
If adding a network printer choose A Network printer or a printer attached to another printer and then click next.



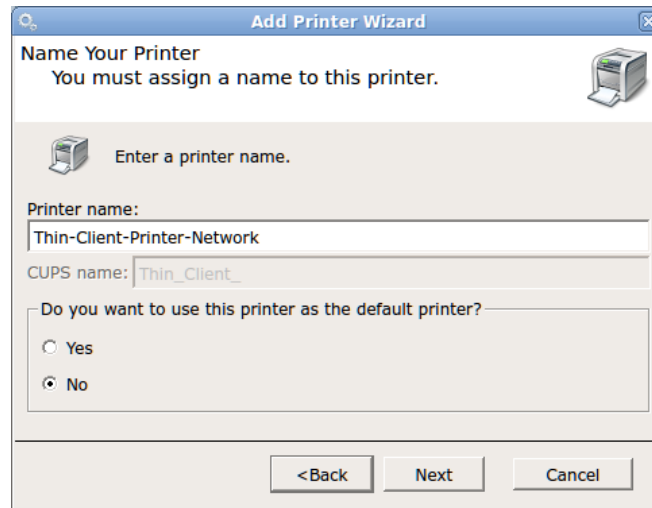
Enter the name or IP address of your network printer and either to connect via LPD/LPR or the RAW protocol, enter in the queue name or port depending on connection type and click next.



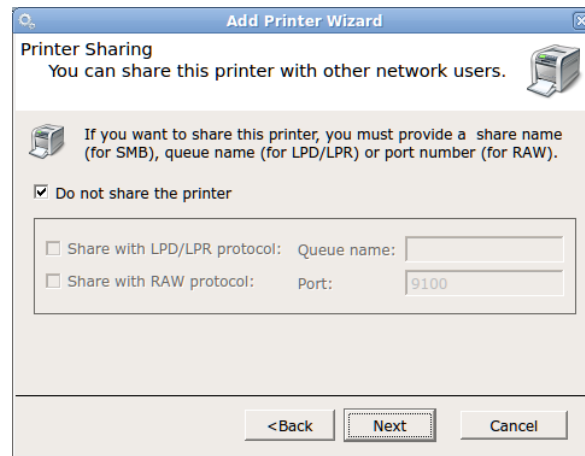
Choose you printer drivers and click Next



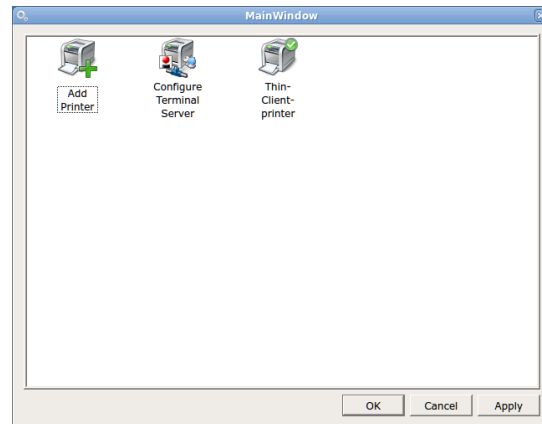
Now give your printer a name and choose if this is to be your default printer for you thin client and click next.



Now choose if you want to share this printer or not, either using LPD/LDR or with the RAW protocol and click next.



Choose your paper size and click next, then click if you would like to print a test page and click next and then the finish button and you will see your local printer in the main window of the printer applet. Click ok to exit the printer applet



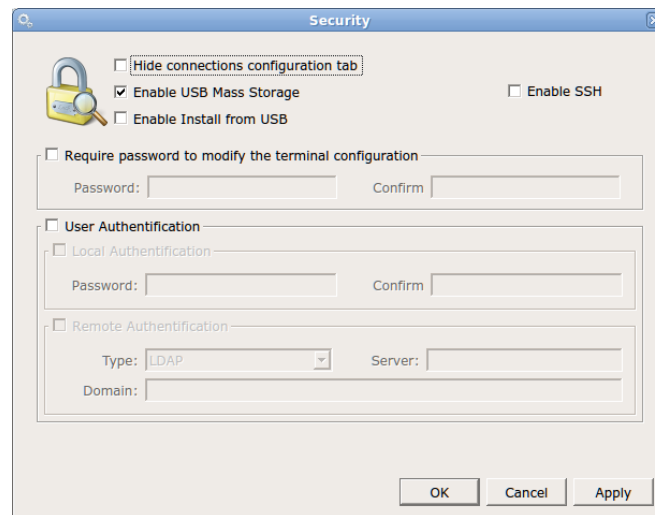
Security



Security

The Security applet allows administrators to Hide the configuration tab to prevent users from adding additional connections, Enable USB Mass Storage for thumb drives or external USB drive, and also allows Administrators to install a certificate from a USB drive.

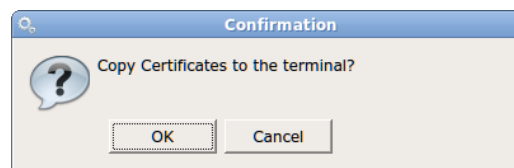
The Security applet also allows administrators to require a password to modify the terminal properties, and can also allow for a local password to be used to log on to the thin client and can be used for LDAP authentication.



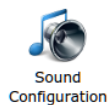
Install SSL Certificate

To import a certificate from a USB drive, Enter the Terminal properties, then double click on the Security icon, now check the box to "Enable installation from USB storage" and then click the OK button.

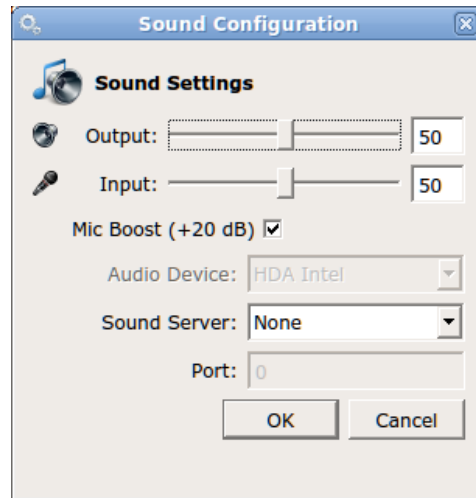
Now you can insert a USB drive (Formatted to FAT32) into the unit that contains a **.crt** or **.pem** file in the root directory. This will automatically open the copy certificates confirmation box, click OK and your certificated will now be installed and can be viewed in the certificates applet which will open automatically after copying the certificates.



Sound Configuration



The Sound window allows you to control the speaker (Output:) and microphone (Input:) volumes, and tells what Audio device is being used. You can also set an optional Linux Sound Server with either ESD or aRTs settings. If you are not sure about the sound server settings check with your Linux administrator.



System



System

System Information tab

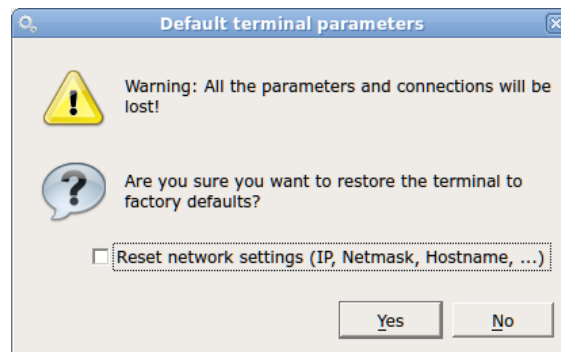
The System Information Tab will allow administrators to identify the product name, the product ID (same as the MAC address) the kernel version, the Software version

(a.k.a firmware version) the amount of RAM installed and being used and CPU information about your 5872



Restore Factory Defaults

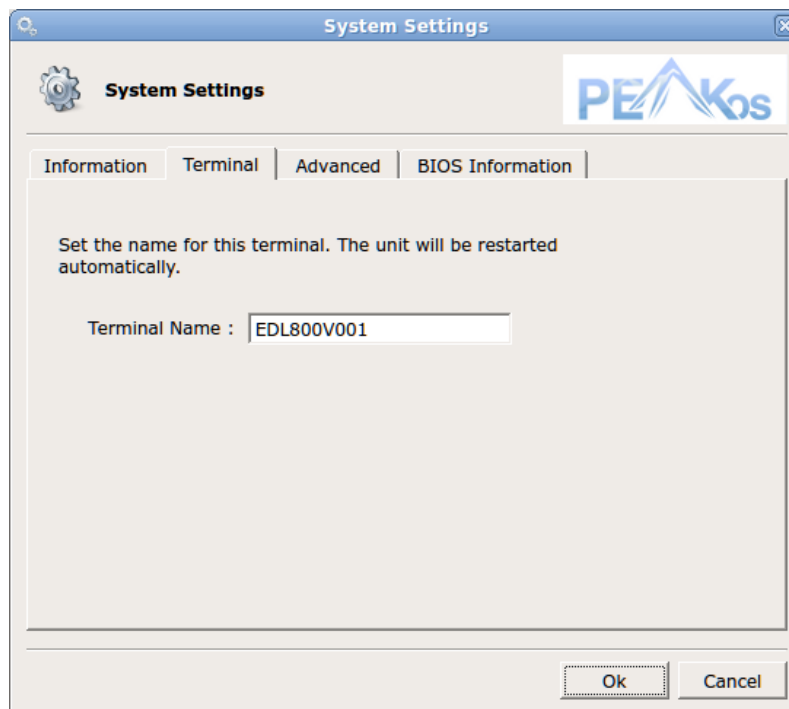
To restore your 5872 parameters to factory defaults, just check the box, then click the OK button.



You will then see a dialog box pop up to confirm you want to reset all parameters on your 5872 and the option to reset the network settings, if you want to reset the network work option check the box and then click OK and your 5872 will reboot and be back to the factory settings. (Note: all connection will be erased and need to be re-created).

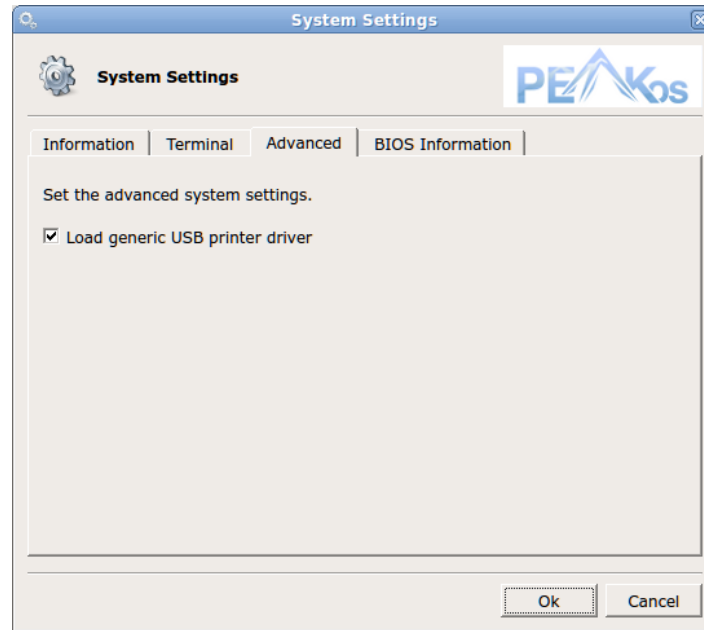
System Terminal Tab

The System Terminal tab allows administrators to see the current system name, and can change the name of the terminal.



System Advanced Tab

The System Advanced tab only allow you to enable or disable the loading of generic USB printer drivers,



System BIOS Information Tab

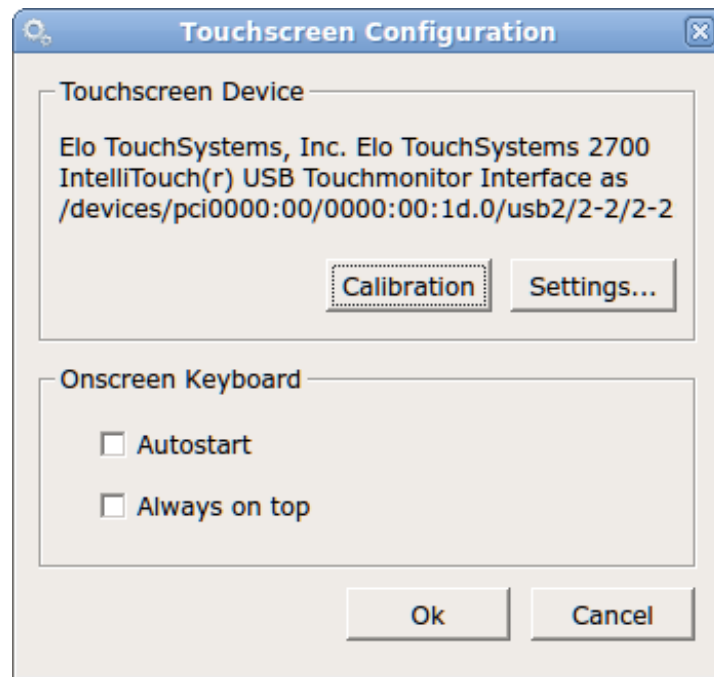
The BIOS information tab allow administrators to view the current BIOS information or your 5872 including the Vendor name, BIOS version and the release date of that BIOS version.



Touchscreen

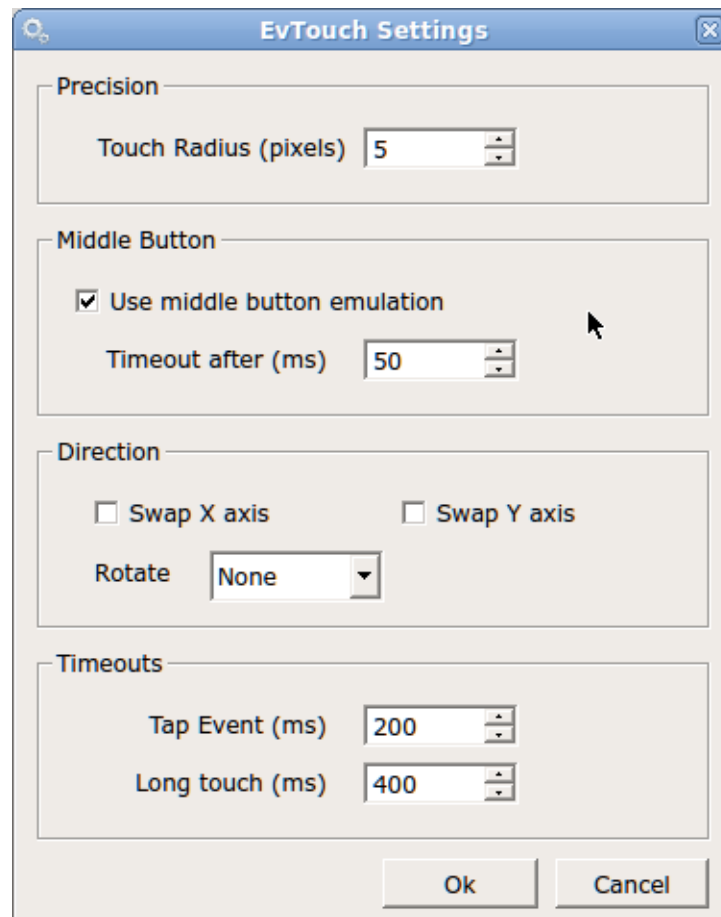


Touchscreen The 5872 will support certain Elo touchscreen devices, once you have connected and powered up your Elo touchscreen, open the Touchscreen applet.



Here you can Calibrate your touchscreen by click the Calibration button, allow the onscreen keyboard to autostart and or always be on top and change the touch screen settings by click on the Settings button.

Here you can change the Touch Radius, enable middle button emulations, change the x, y axis or rotate the screen and change the tap and touch timeouts.

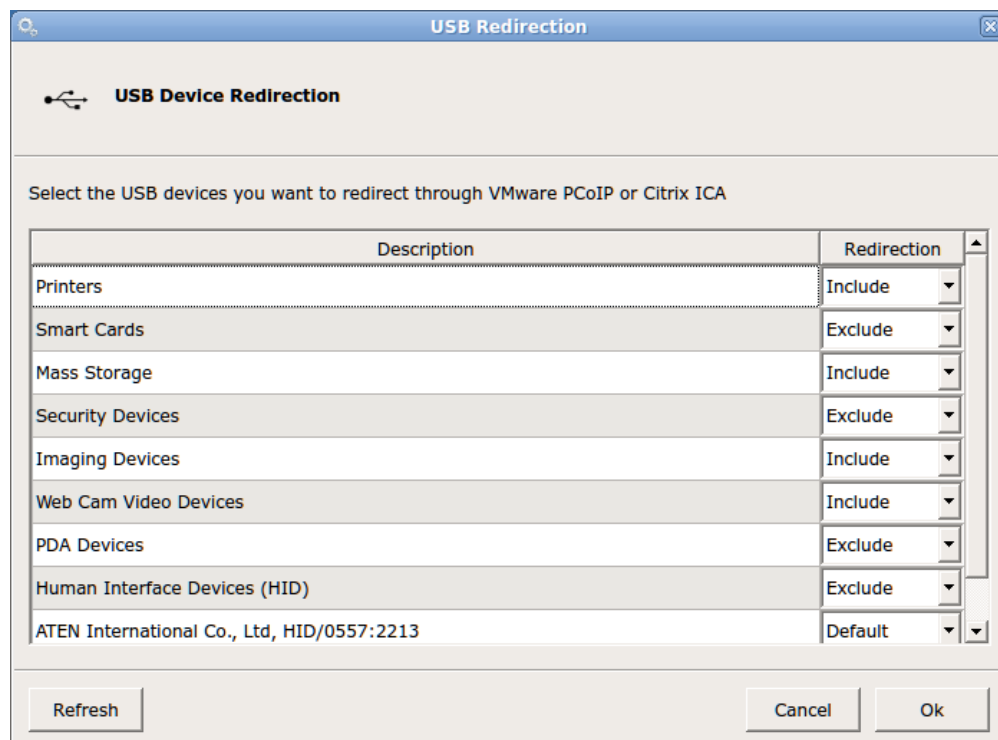


USB Redirection



USB
Redirection

USB Device Redirection for VMware, Citrix, and RDP may be controlled here. Options are **Default**, **Include** or **Exclude**. **NOTE: USB Redirection in VMware View Client** - when a USB printer or USB storage device is connected to the thin client, the VM (Virtual Machine) will immediately recognize the USB device and indicate that new hardware has been found. For printers, the printer driver must be installed on the VM in order for it to work correctly.



The screenshot shows a dialog box titled "USB Redirection" with a USB icon and the text "USB Device Redirection". Below this, it says "Select the USB devices you want to redirect through VMware PCoIP or Citrix ICA". There is a table with two columns: "Description" and "Redirection". The table lists various device categories and their current redirection settings. At the bottom of the dialog are "Refresh", "Cancel", and "Ok" buttons.

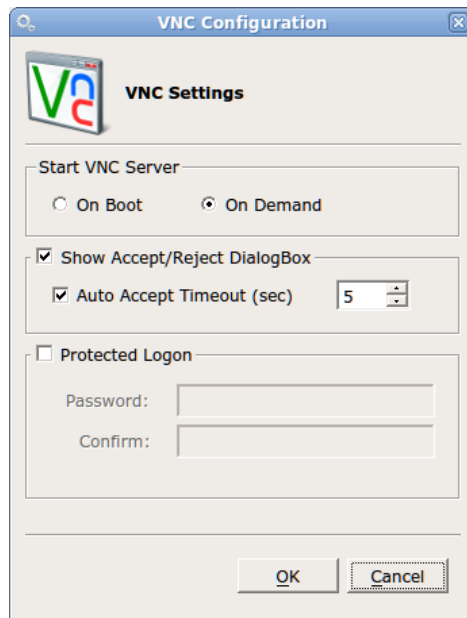
Description	Redirection
Printers	Include
Smart Cards	Exclude
Mass Storage	Include
Security Devices	Exclude
Imaging Devices	Include
Web Cam Video Devices	Include
PDA Devices	Exclude
Human Interface Devices (HID)	Exclude
ATEN International Co., Ltd, HID/0557:2213	Default

VNC Shadowing



VNC Shadowing

Here you may edit the settings used to remotely connect to the unit using VNC (Virtual Network Computing). Options include: when the server should start, whether or not to prompt the user for permission to connect to the unit, and the option to password protect any connection from a remote source.



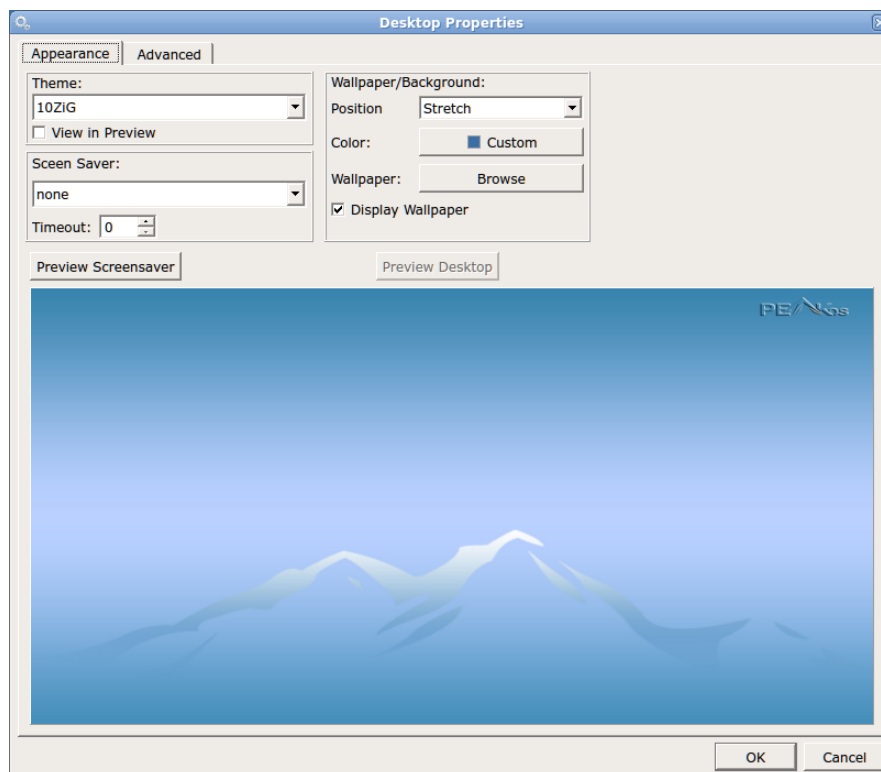
Desktop



Desktop

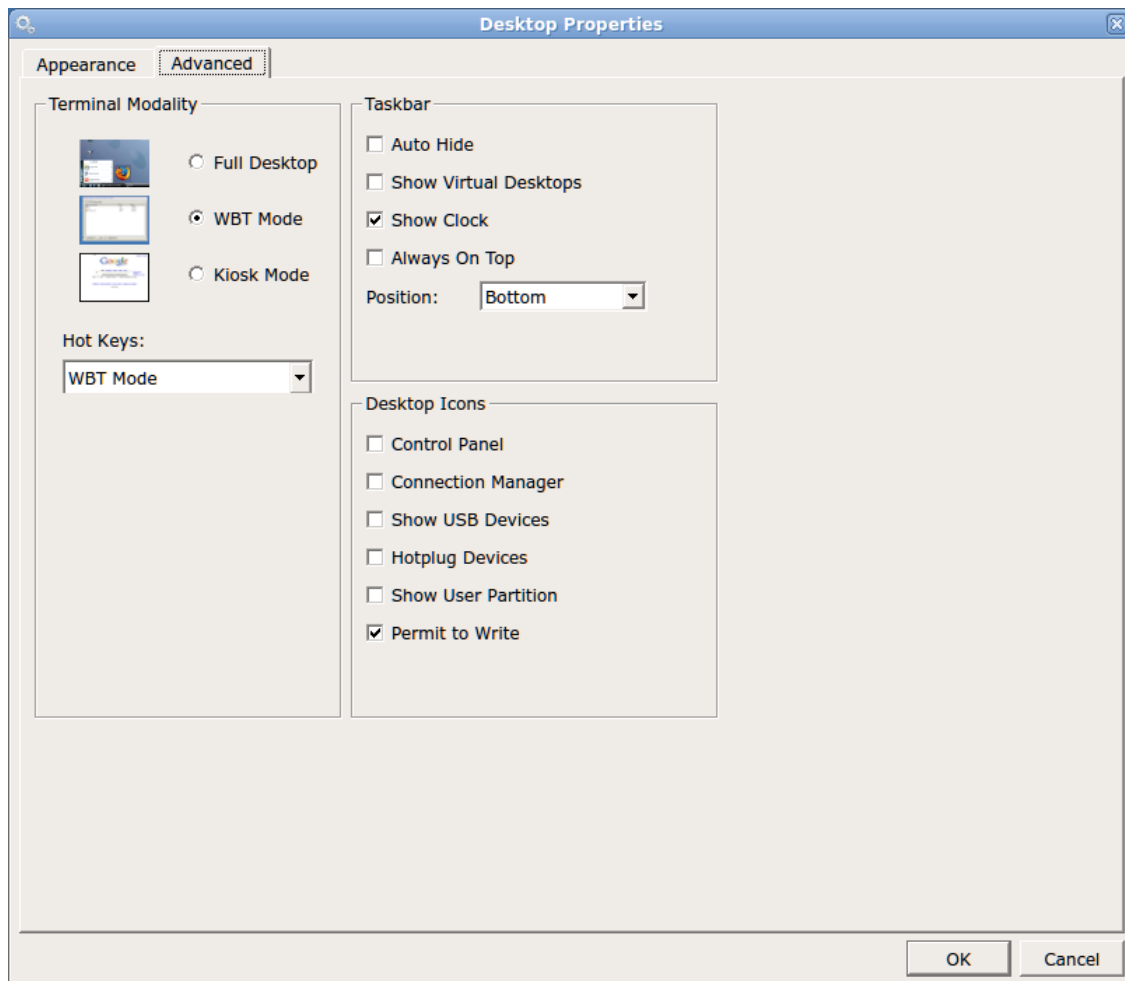
Desktop Appearance Tab

The desktop appearance tab administrators can choose a Theme, Set a screen saver and timeout for the screen saver, choose a wallpaper position, choose a custom color or use a custom wallpaper.



Desktop Advanced Tab

Using the Advanced tab administrators can choose to mode the desktop starts up as, choose options for the task bar, and choose which desktop icons will be shown.



Desktop Advanced Tab – WBT Mode

Windows based Terminal mode, where the terminal behaves like a CE.NET device with full screen applications, Terminal Server access, Citrix or VDI which auto start and auto-reconnect.

Desktop Advanced Tab – Full Desktop

A Windows type user interface provides access to all applications in a windowing environment.

Desktop Advanced Tab – Kiosk Mode

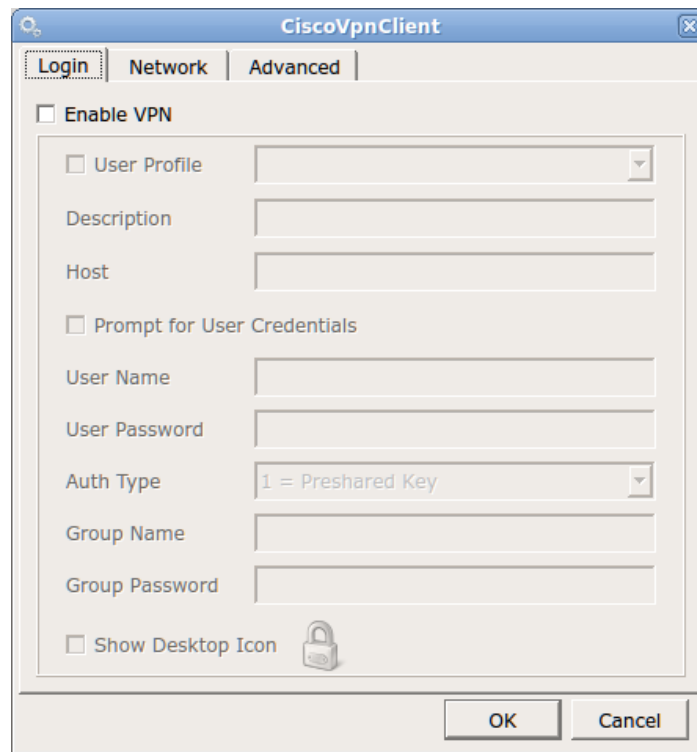
Dedicated Kiosk type of interface not configurable by the user of the terminal

Cisco VPN Client



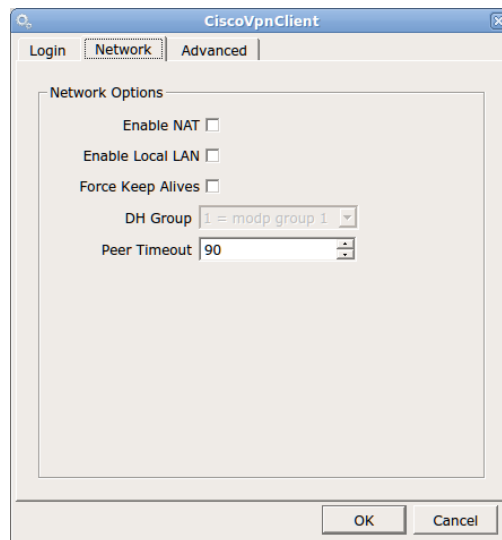
Cisco VPN Client – Login Tab

On the login tab you can enable the VPN client by clicking the Enable VPN check box, and then enter an user's description and a host, or enter a user name and password, or have the users prompt for their credentials, choose authentication type, either preshared key, Digital RSA cert or Mutual group, enter a group name and password and choose to show the icon on the desktop.



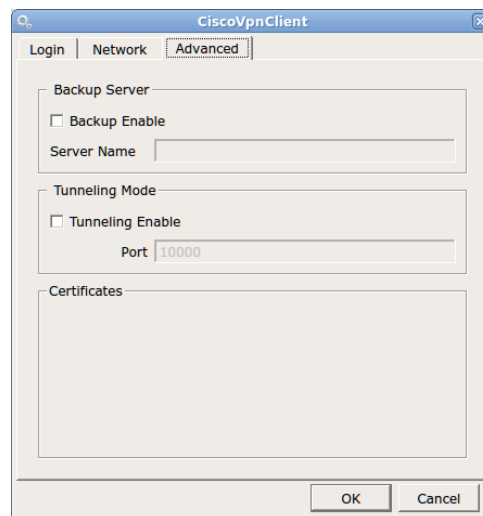
Cisco VPN Client – Network Tab

The VPN Network tab give you the options to enable NAT, enable Local LAN, Force Keep Alives, and choose a peer timeout.



Cisco VPN Client – Advanced Tab

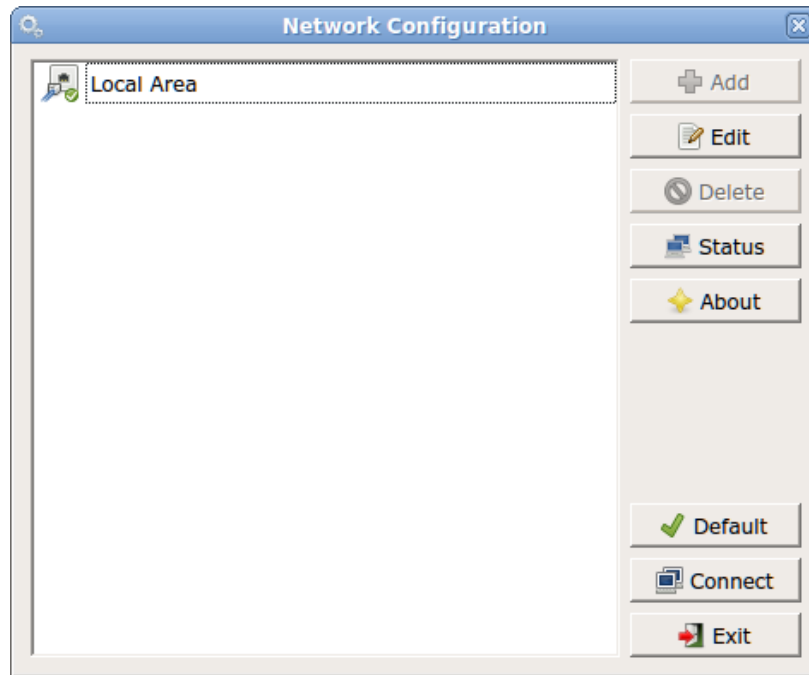
The VPN advanced tab you can choose to enable a backup server and the server name and enable tunneling mode.



Network

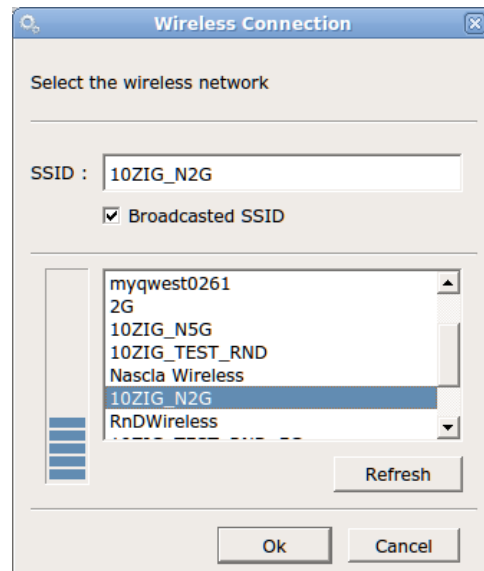


Here you will find options to configure your network settings. If only one type of connection is available, it will be automatically set to **Default**.

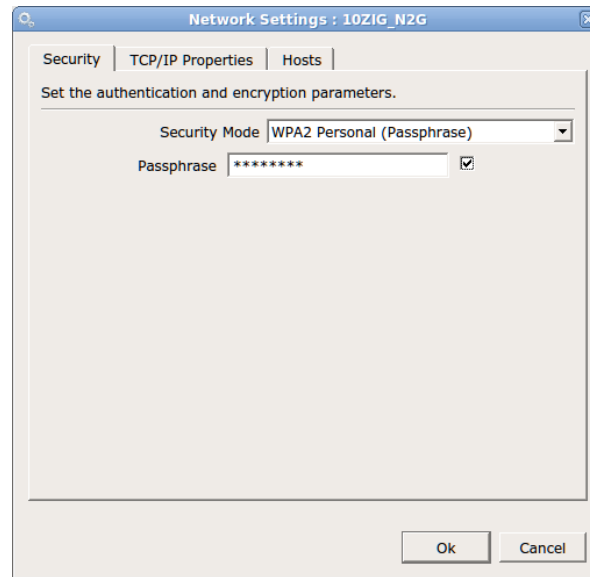


Wireless Network Connection (Optional)

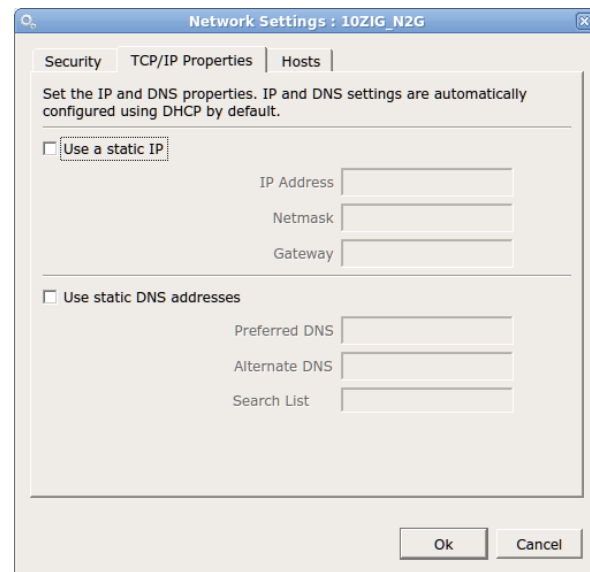
Open the Network Configuration applet by double clicking on the Network Icon, now click the Add button and the Wireless Connection properties will open, click the refresh button to see a list of Broadcasted SSID in your environment, choose the wireless access point you would like to connect to and then click the ok button.



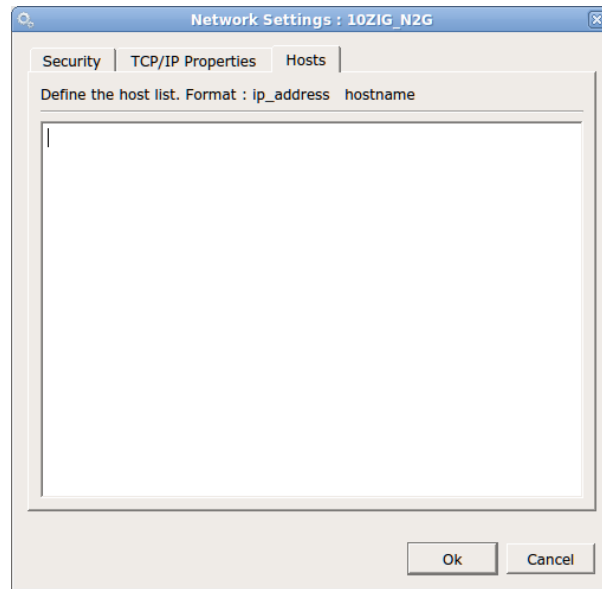
You will now see the wireless network settings, from the security tab choose your Security Mode from the dropdown list and type in your passphrase (if applicable to your security mode choice). If you uncheck the box next to passphrase your passphrase will be shown in plain text.



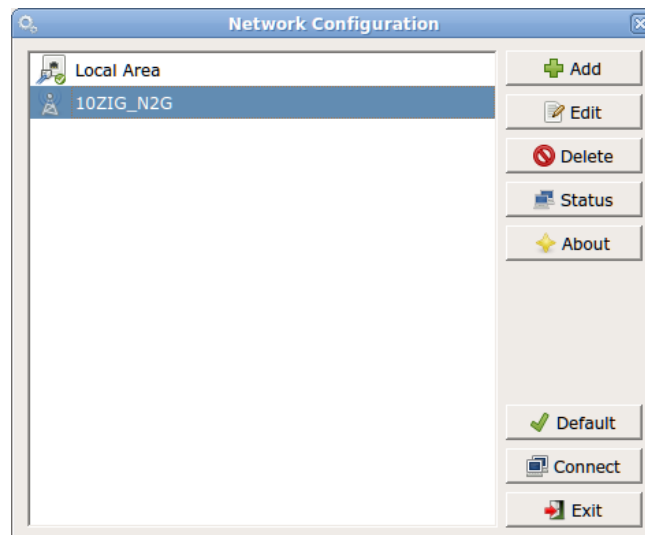
From the TCP/IP Properties Tab you can set a **static IP address** if used in your environment, and also use specific **DNS server** addresses



Using the Hosts tab you can define the host list for the wireless connection. Once you have your wireless options set, click on the ok button.



You will now see your wireless connection listed on the Network Configuration list, to make this new wireless connection active, highlight your wireless connection and then click the Connect button. If you would like to make this the default connection for your 5872, once connected then highlight this connection and click the Default button and then will now be the default connection. Click the exit button to return to the Terminal properties.



Citrix XenApp Agent



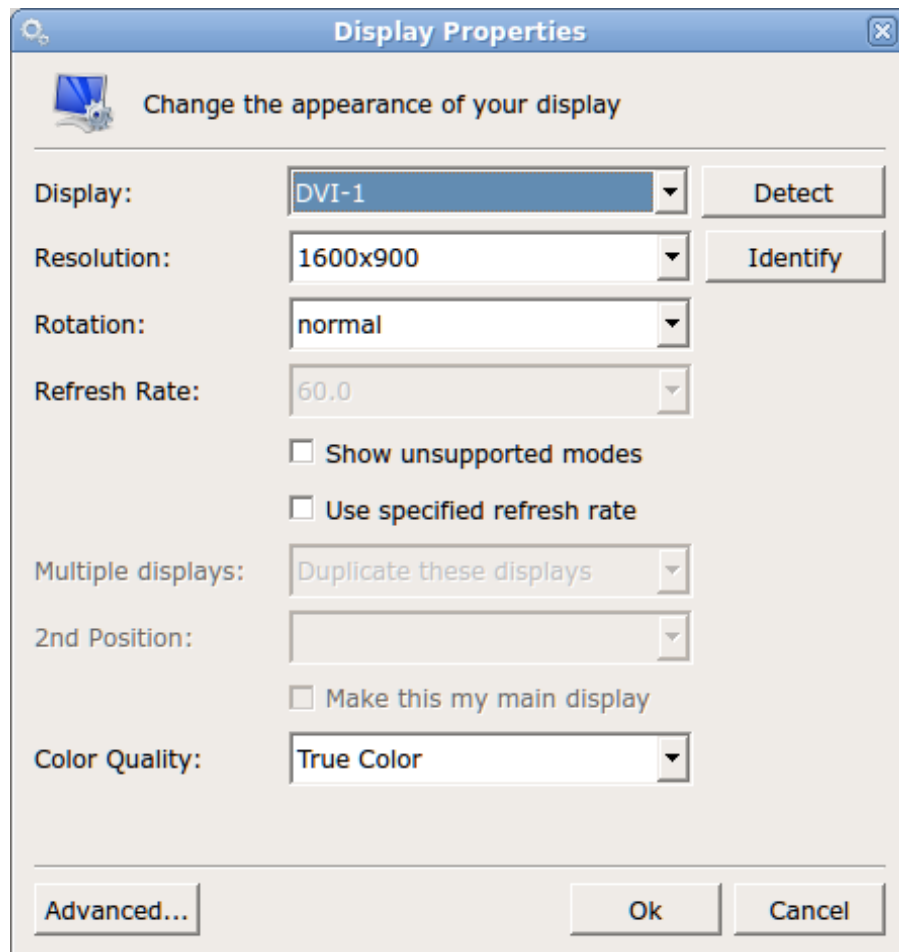
For connections to legacy PNAgent Citrix environments



Display



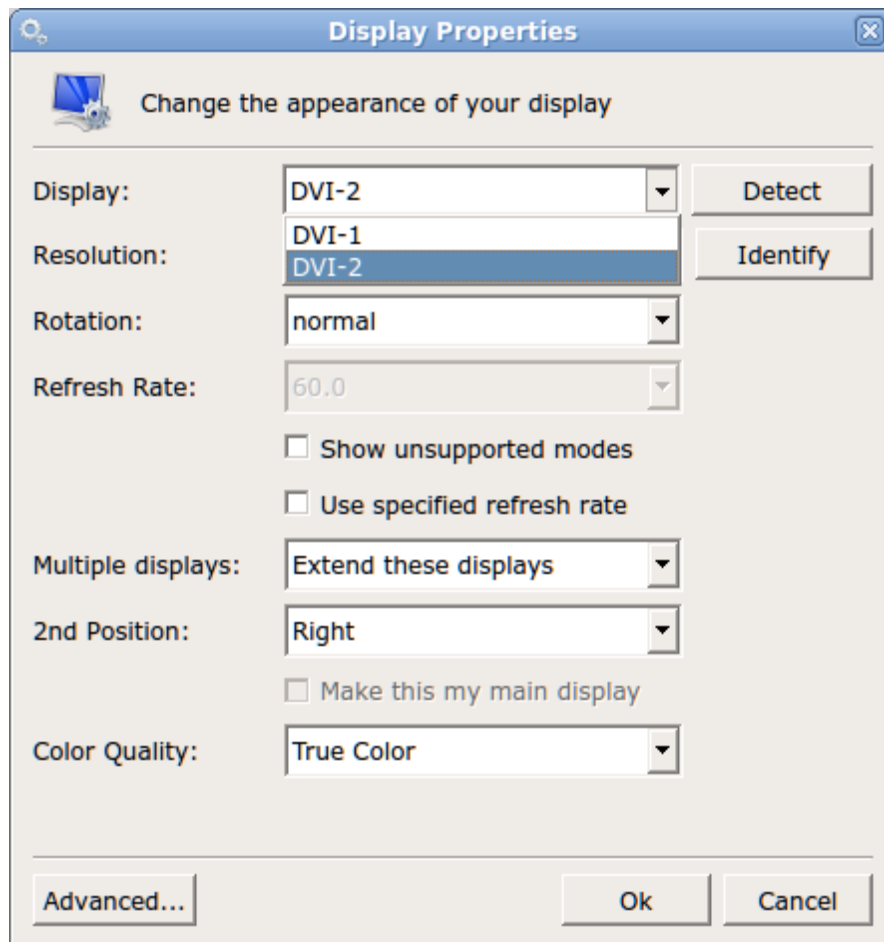
Display The Display Settings window allows you to configure your screen resolution along with the refresh rate and the color quality. Other options here include rotation and support for multiple displays, if detected.



Dual Monitors

When multiple displays are detected, you will be given the option to select Make this my main display for either DVI-1 or DVI-2, and to Duplicate or Extend these displays

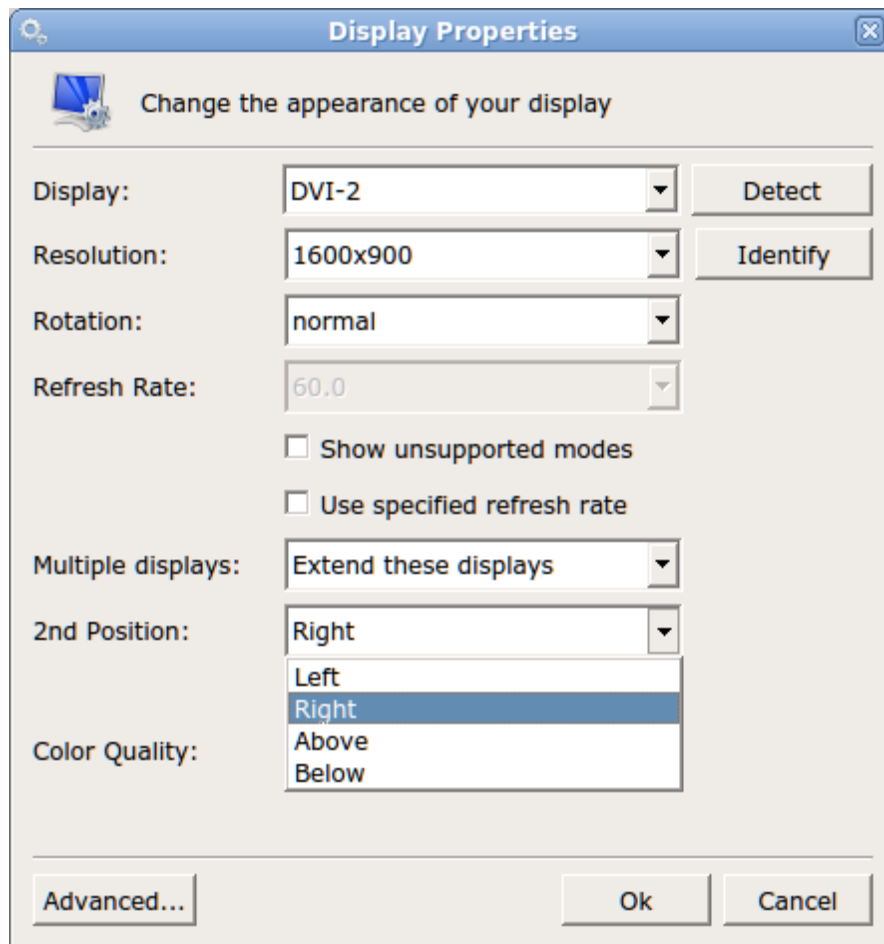
To detect or reset detection, click on the **Detect** button.



You can change the resolution of each monitor by selecting the resolution you want for DVI-1 and DVI-2.

The Identify button when press will identify each display as #1 or #2.

If you choose to extend these displays you can choose the position of the 2nd monitor to Right, Left, Above or Below depending on how you wish your display topology to be.



Display - Advanced Tab

Clicking the Advanced button will open the window with options to enable Power Saving-DPMS settings. Here you may configure the timers for each desired instance. You can also enable or disable XRender and enable or Disable Native Acceleration. (Note: Disable Native Acceleration is only valid with a single display or when both display have a matching maximum resolution).

